

How to Replace the Rotary Switch

1) Remove the Rubber Boot from the Unit.

2) Remove 2 screws from the Battery Cover.



Screw M/S 3*8

3) Open the Battery Cover.

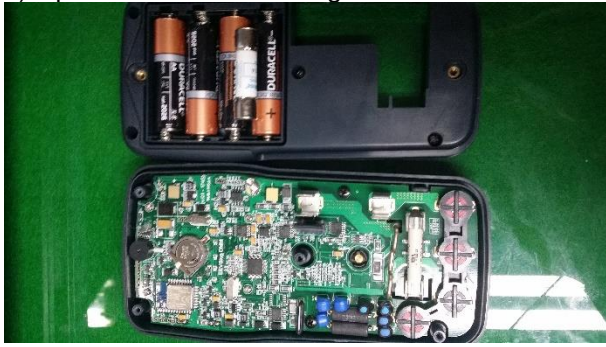


4) Remove 4 screws from the Bottom Housing.

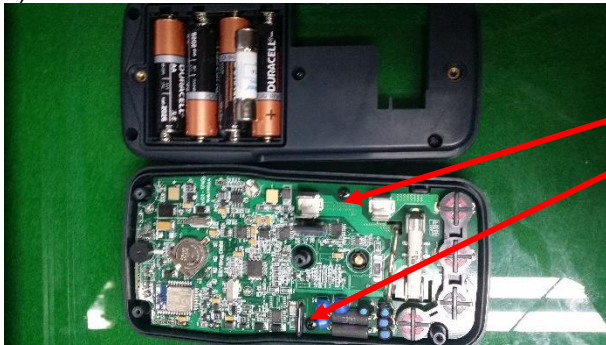


Screw T/S 3 * 12

5) Open the Bottom Housing and Remove the Fuse (11A).



6) Remove 2 screws from the PCB.



Screw T/S 2.6 * 6

7) Remove the PCB from the Top Housing and Remove the E-Ring from the Metal axis of the Rotary Switch.



Remove E-Ring

8) Remove the Rotary Switch from the Top Housing.

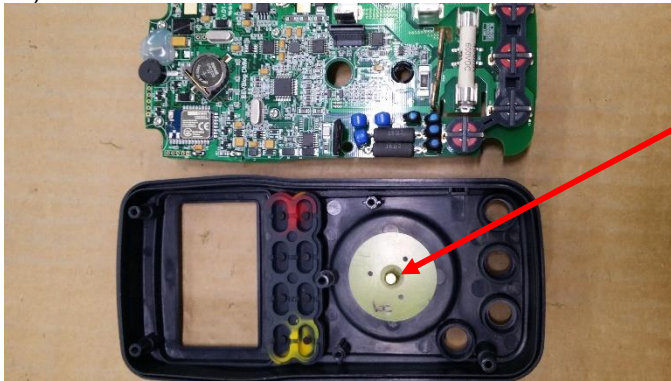


9) Insert the New Rotary Switch to the Top Housing and Assemble the E-Ring.

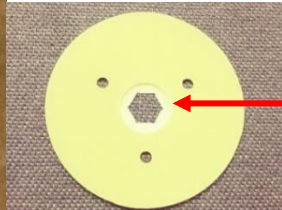


Switch must be "OFF" position.

10) Insert the Shim to the metal axis.



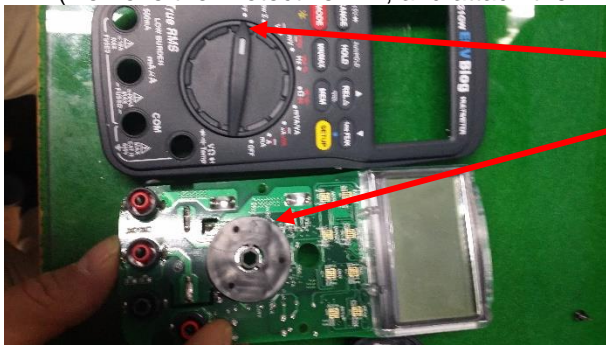
Very Important !!
Round Recess on the Shim must be facing upward.



Round Recess

11) Assemble the PCB and Top Housing.

(Remove the Protective film, and attach the Film to the Window after assembling.)



The direction of Arrows must be same

12) Make sure that the 3 PTCs are lined up in a row.



The 3 PTCs must stand straight.

- 13) Ressemble in reverse order of disassembly step 4 ~ 6.
And then, Remove the SD Card from the unit.



- 14) Download the Updated bin file “EEVBlog.bin(V-1.14)” to the SD card (by using an SD Card reader).

- 15) Insert the SD card to the unit, and download the Updated Software to the Unit.

- 16) Follow these procedures to downloading the Updated Software.

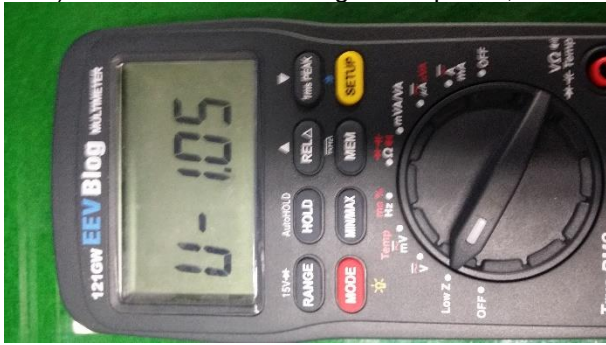
- 16-1) Press “HOLD” & “MEM” buttons while turning the Meter on to enter the Download mode.



- 16-2) Press “SETUP” button to start Downloading.



16-3) When the Downloading is completed, the Meter will display Software Version number.



17) Ressemble in reverse order of disassembly step 1 ~ 3.

18) Verify if the Meter displays "OFL" in the Diode mode to check the function of New Rotary Switch.