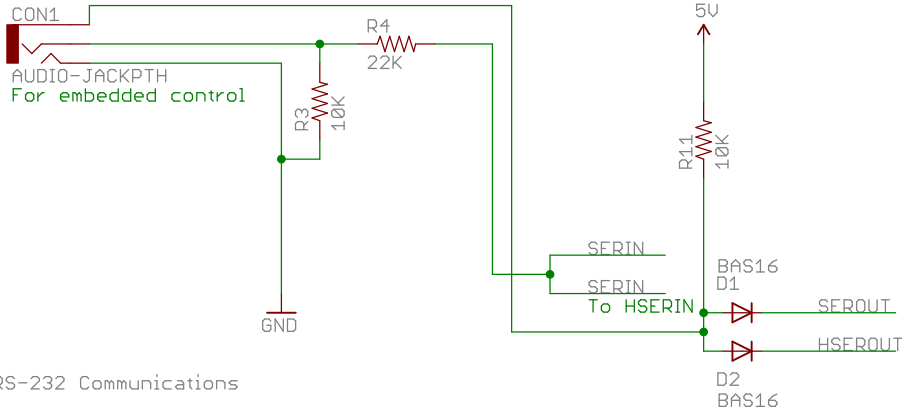
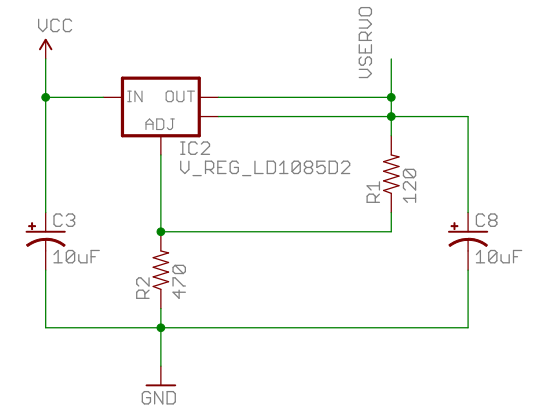


PICAXE download socket

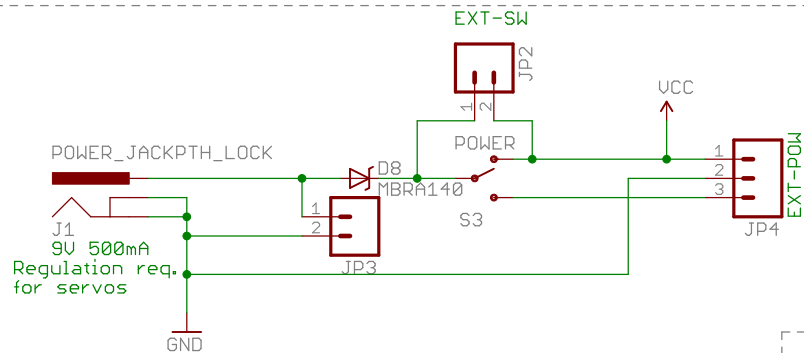


Voltage regulator for the servos

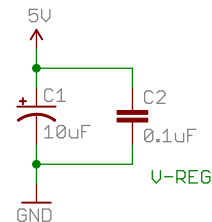


CONSIDER USING SPRING TERMINALS

Total device current consumption (internal): 250mA @ normal operating conditions
Recommended supply current capability: 500mA

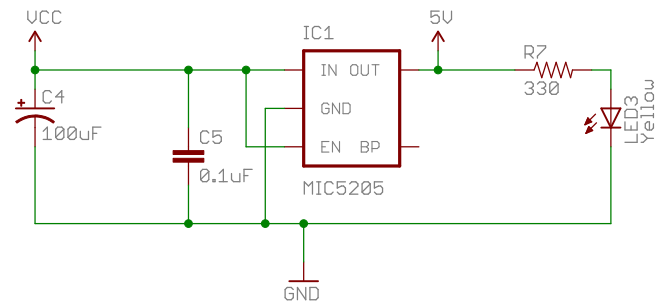


Power supply



Regulator

Fixed 5V version



This work by Iván E. Veloz Guerrero is licensed under a Creative Commons Attribution-NonCommercial 3.0 Unported License.

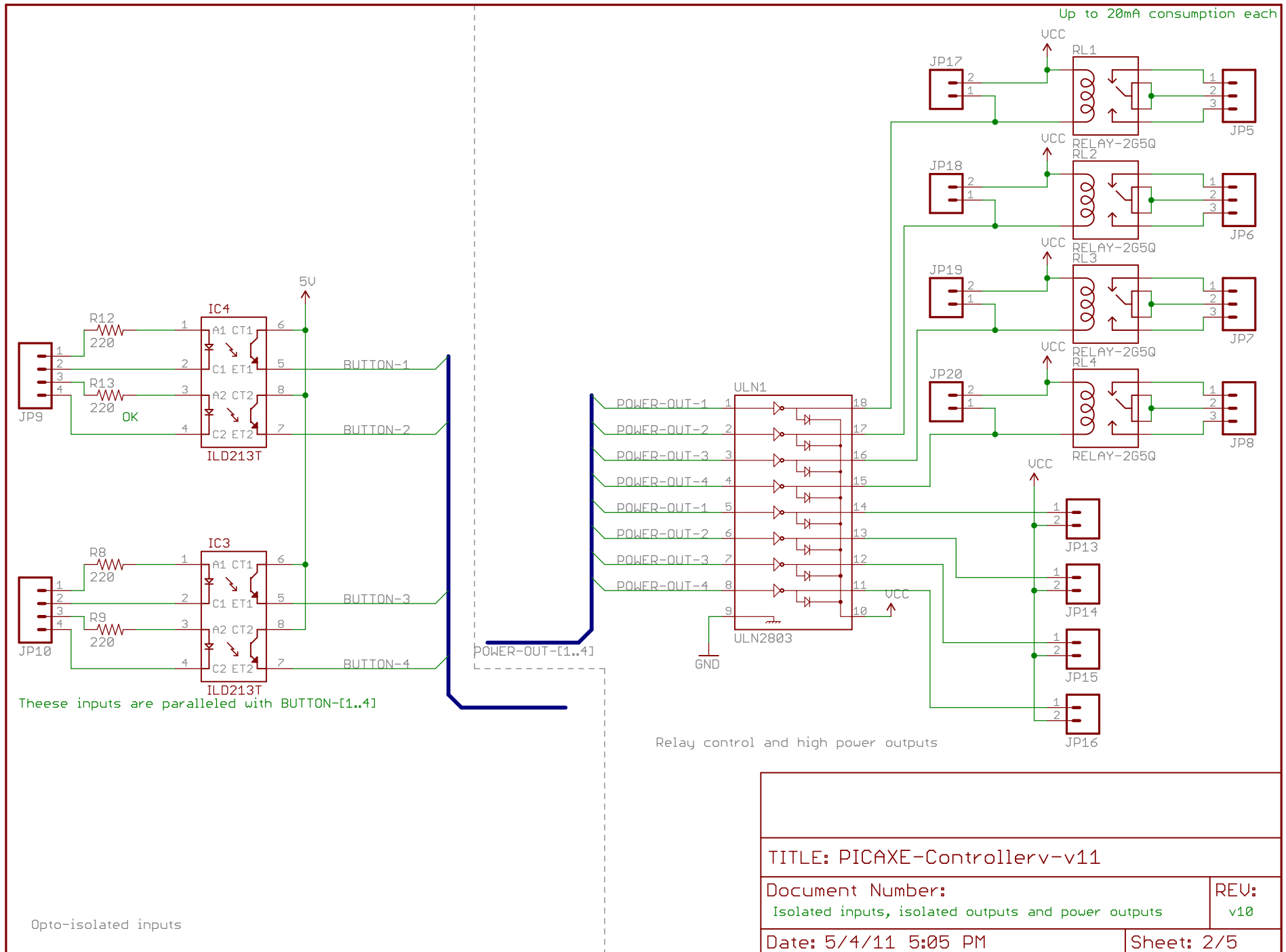
TITLE: PICAXE-Controllerv-v11

Document Number:
Supply and RS-232

REV:
v10

Date: 5/4/11 5:05 PM

Sheet: 1/5



TITLE: PICAXE-Controllerv-v11

Document Number:

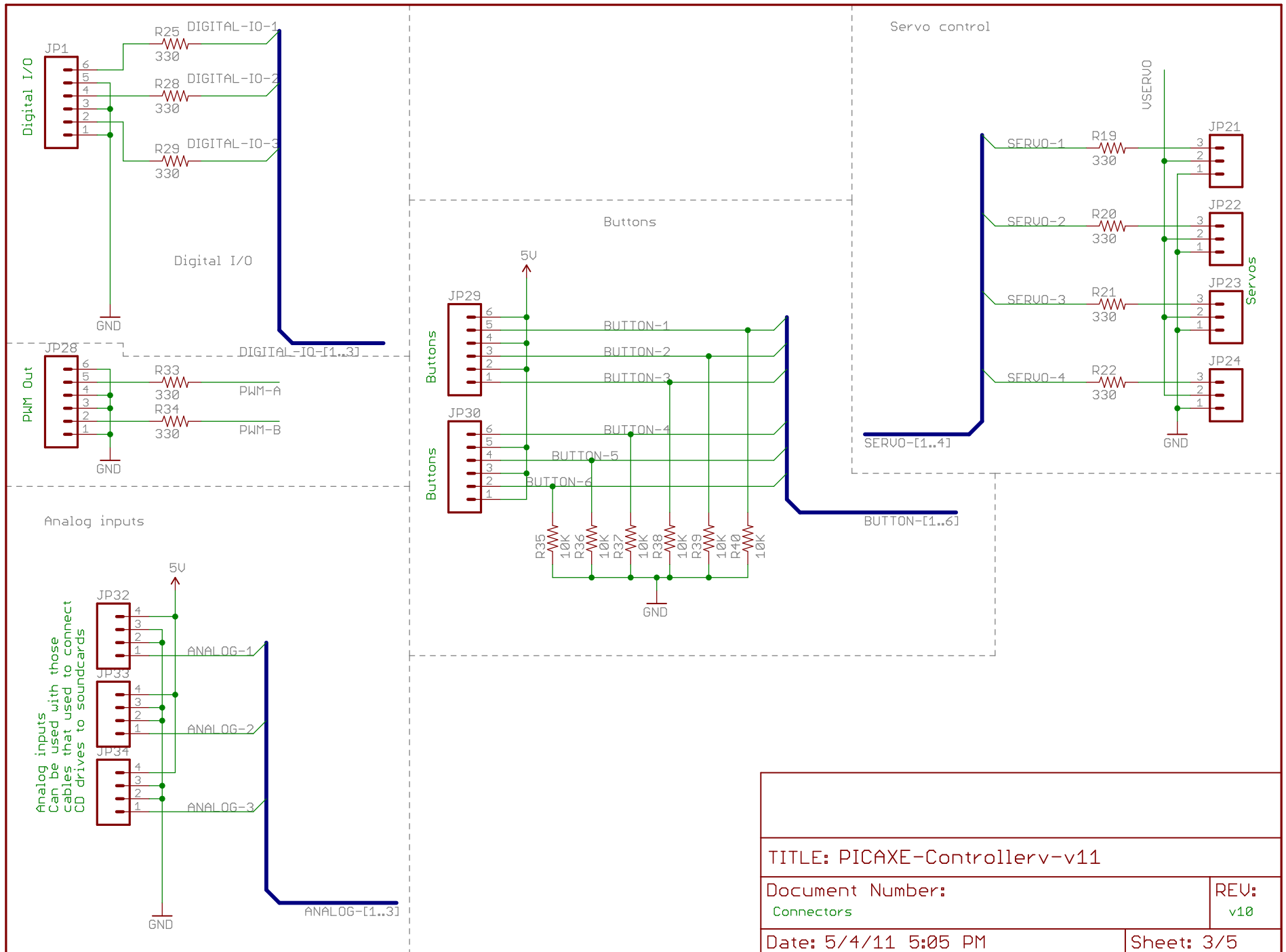
Isolated inputs, isolated outputs and power outputs

REV:

v10

Date: 5/4/11 5:05 PM

Sheet: 2/5



TITLE: PICAXE-Controllerv-v11

Document Number:

Connectors

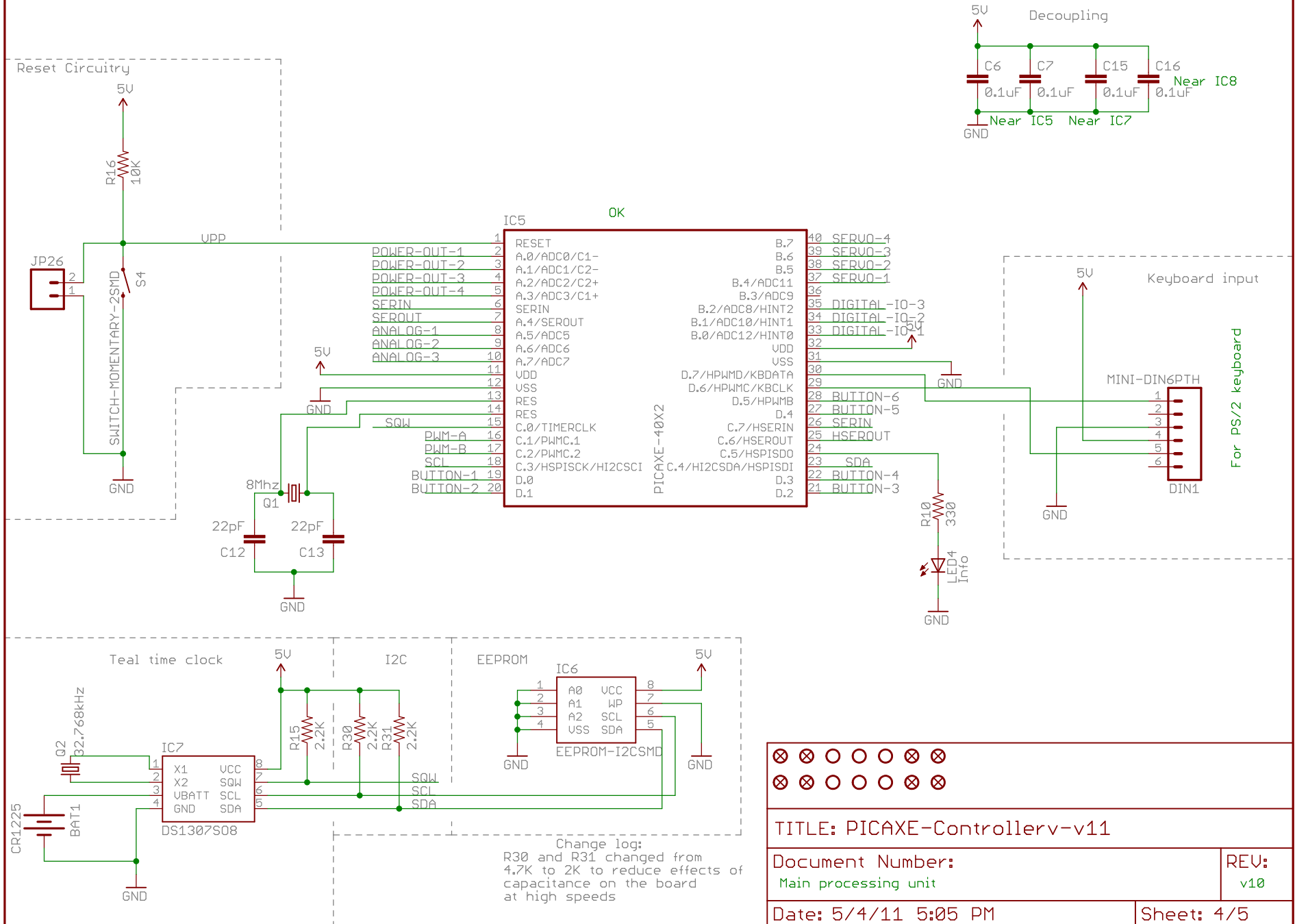
REV:

v10

Date: 5/4/11 5:05 PM

Sheet: 3/5

Don't even think about resetting IC5 while programming it as a PIC



⊗ ⊗ ○ ○ ○ ⊗ ⊗
⊗ ⊗ ○ ○ ○ ⊗ ⊗

TITLE: PICAXE-Controllerv-v11

Document Number:

Main processing unit

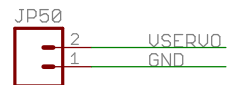
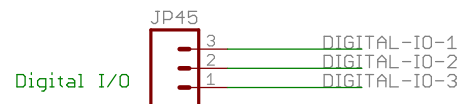
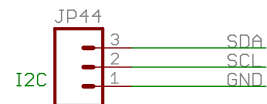
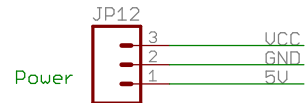
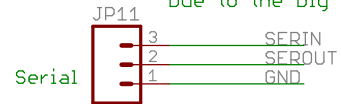
REV:

v10

Date: 5/4/11 5:05 PM

Sheet: 4/5

Due to the big enclosure size and the need for connectors on both sides, a prototyping area is present



BREADBOARDMINI



BREADBOARDMINI

TITLE: PICAXE-Controllerv-v11

Document Number:
Prototyping area

REV:
v10

Date: 5/4/11 5:05 PM

Sheet: 5/5