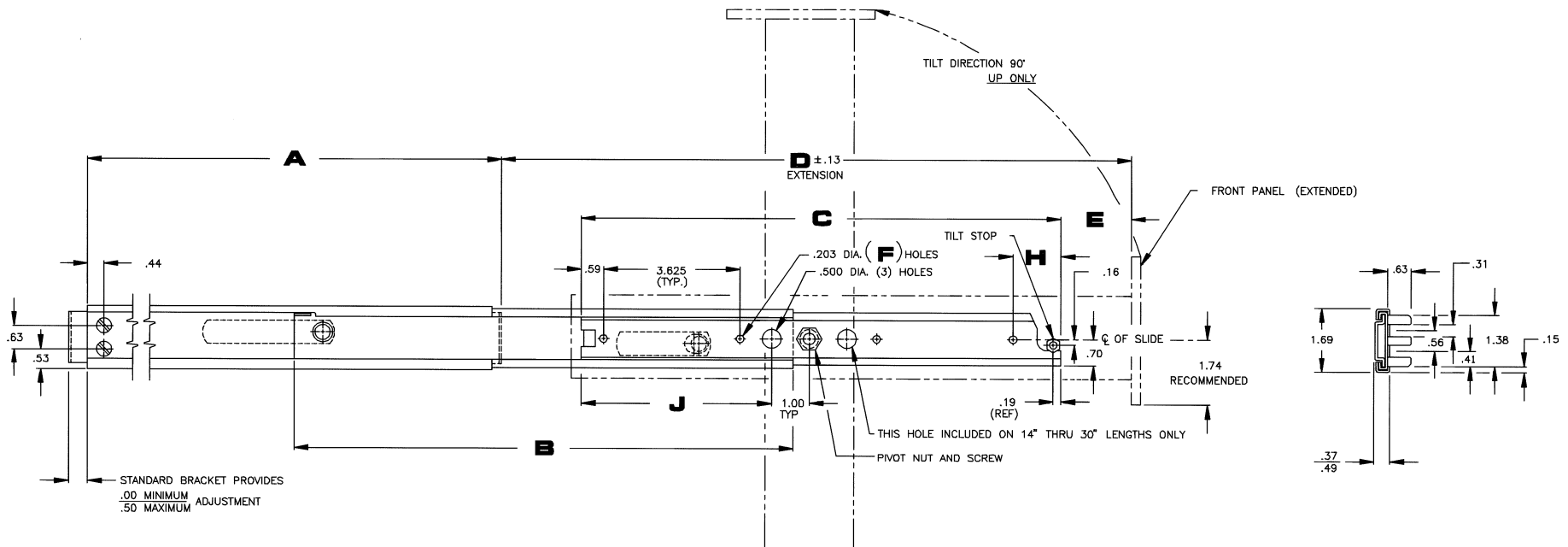
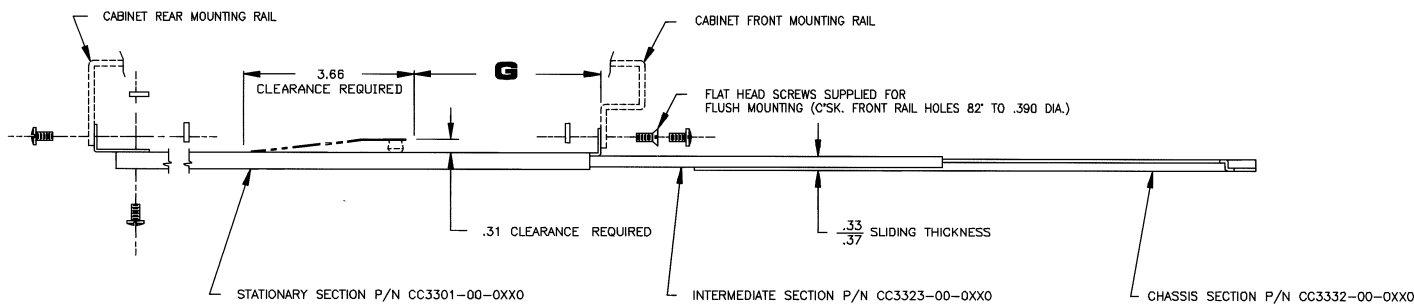


# Model C-300-B



## Pivot Up Solid Bearing Slide Available In Stainless Steel



# Model C-300-B

## Pivot Up Solid Bearing Slide

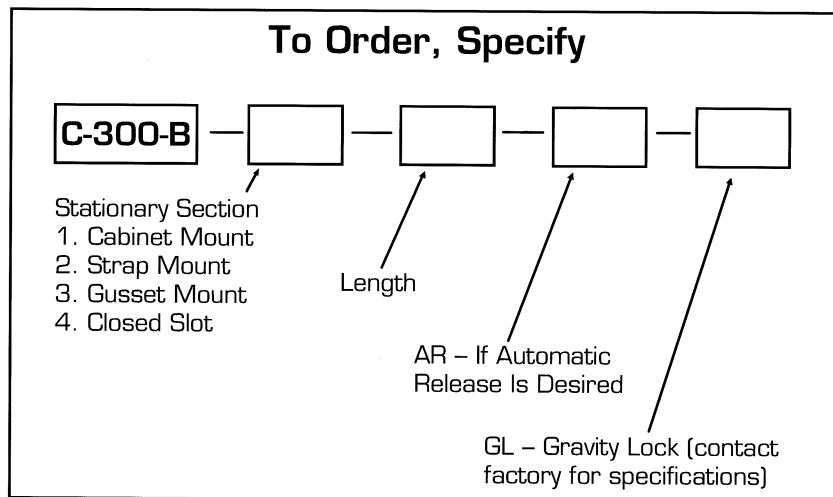
Available In Stainless Steel

**Model C-300-B Dimensions & Load Capacities**

CATALOG NUMBER	A	B	C	D (MIN)	D (MAX)	E (MIN)	E (MAX)	F	G	H	J	LOAD CAPACITY
C-300-B-110	10.00	9.25	8.63	11.00	11.00	0.13	0.13	3	2.31	0.78	3.72	95 LBS.
C-300-B-112	12.00	9.25	8.63	11.00	13.00	0.13	2.13	3	2.31	0.78	3.72	95 LBS.
C-300-B-114	14.00	13.25	12.63	15.00	15.00	0.13	0.13	4	4.31	1.16	5.06	90 LBS.
C-300-B-116	16.00	13.25	12.63	15.00	17.00	0.13	2.13	4	4.31	1.16	5.06	90 LBS.
C-300-B-118	18.00	13.25	12.63	15.00	19.00	0.13	4.13	4	4.31	1.16	5.06	90 LBS.
C-300-B-120	20.00	19.25	18.63	21.00	21.00	0.13	0.13	5	7.31	3.53	8.75	85 LBS.
C-300-B-122	22.00	19.25	18.63	21.00	23.00	0.13	2.13	5	7.31	3.53	8.75	85 LBS.
C-300-B-124	24.00	19.25	18.63	21.00	25.00	0.13	4.13	5	7.31	3.53	8.75	85 LBS.
C-300-B-126	26.00	25.25	24.63	27.00	27.00	0.13	0.13	7	10.31	2.28	10.38	80 LBS.
C-300-B-128	28.00	25.25	24.63	27.00	29.00	0.13	2.13	7	10.31	2.28	10.38	80 LBS.
C-300-B-130	30.00	25.25	24.63	27.00	31.00	0.13	4.13	7	10.31	2.28	10.38	80 LBS.

All dimensions in inches unless stated otherwise

### To Order, Specify



For Sales Service, Order Entry and Expediting  
(317) 897-7009

For Engineering and/or Technical Assistance  
(317) 897-7010

General Devices Co., Inc. 317-897-7000 [www.generaldevices.com](http://www.generaldevices.com) [sales@generaldevices.com](mailto:sales@generaldevices.com)

## Notes

1. Right hand slide shown, left hand opposite.
2. Finish: All standard slides are coated with Poxylube® dry film lubricant.
3. All standard slides are designed to lock in the extended position.
4. Automatic release is available if lock-out is not desirable.
5. Standard hardware packages include all hardware necessary to mount your Chassis Trak® slides:
  - Rear mounting brackets (B-217)
  - Bar nuts (CA8056-01-0016)
  - #10-32 X .50 F.H.M.S. (flush front rail mounting)
  - #10-32 X .38 B.H.M.S.
  - #10-32 KEPS® nuts
  - Pivot screw (CA8050-11-5001)
  - Tilt stop screw ((CA8050-11-3011)
  - #12-24 KEPS® nuts
  - 5/16-24 Hex nuts
  - 5/16 internal tooth lockwashers
6. All sliding members of this standard slide are made from cold rolled steel. This slide model is also available in stainless steel.
7. All Chassis Trak® solid bearing slides are supplied with a quick disconnect feature. This permits the entire chassis to be easily removed and replaced.
8. Optional mounting patterns, slide lengths and extensions are available.
9. For optional mounting brackets, see pages 26-27.
10. For mounting options, see page 28.