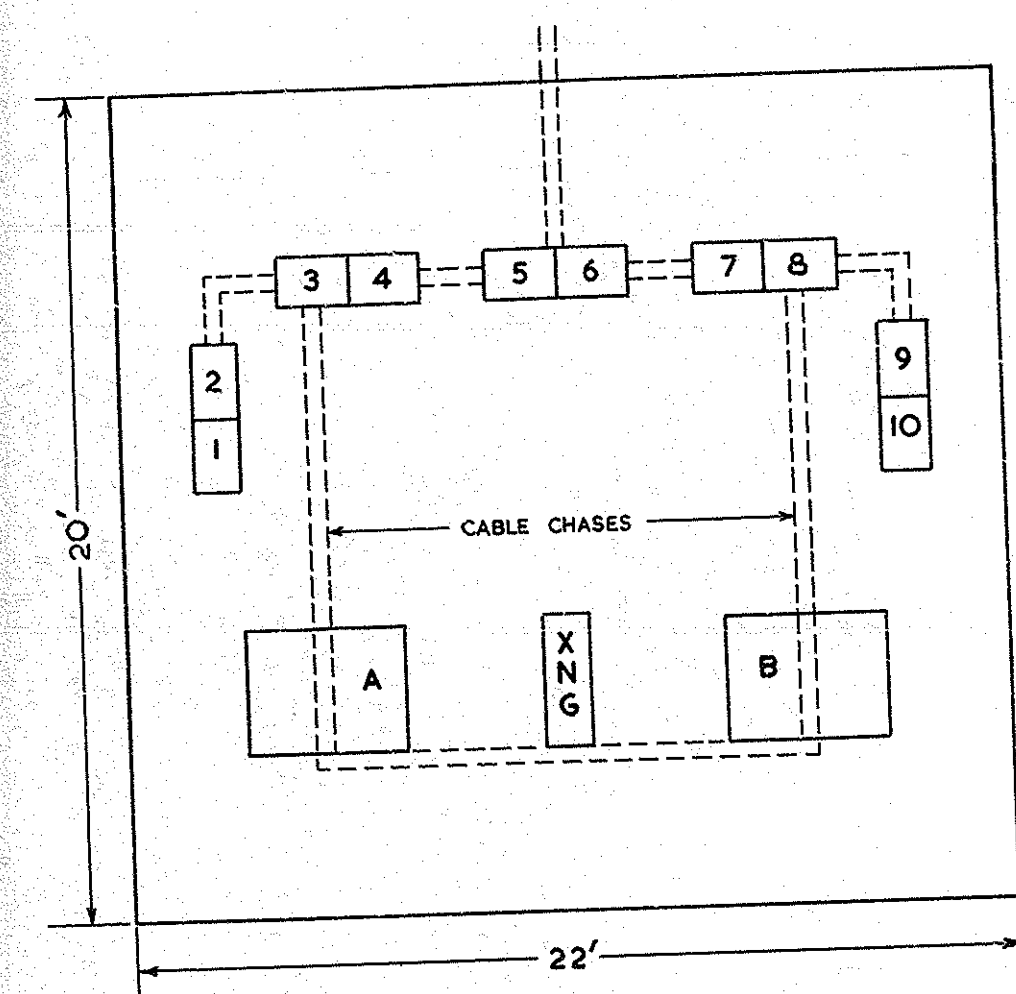


4.4/3

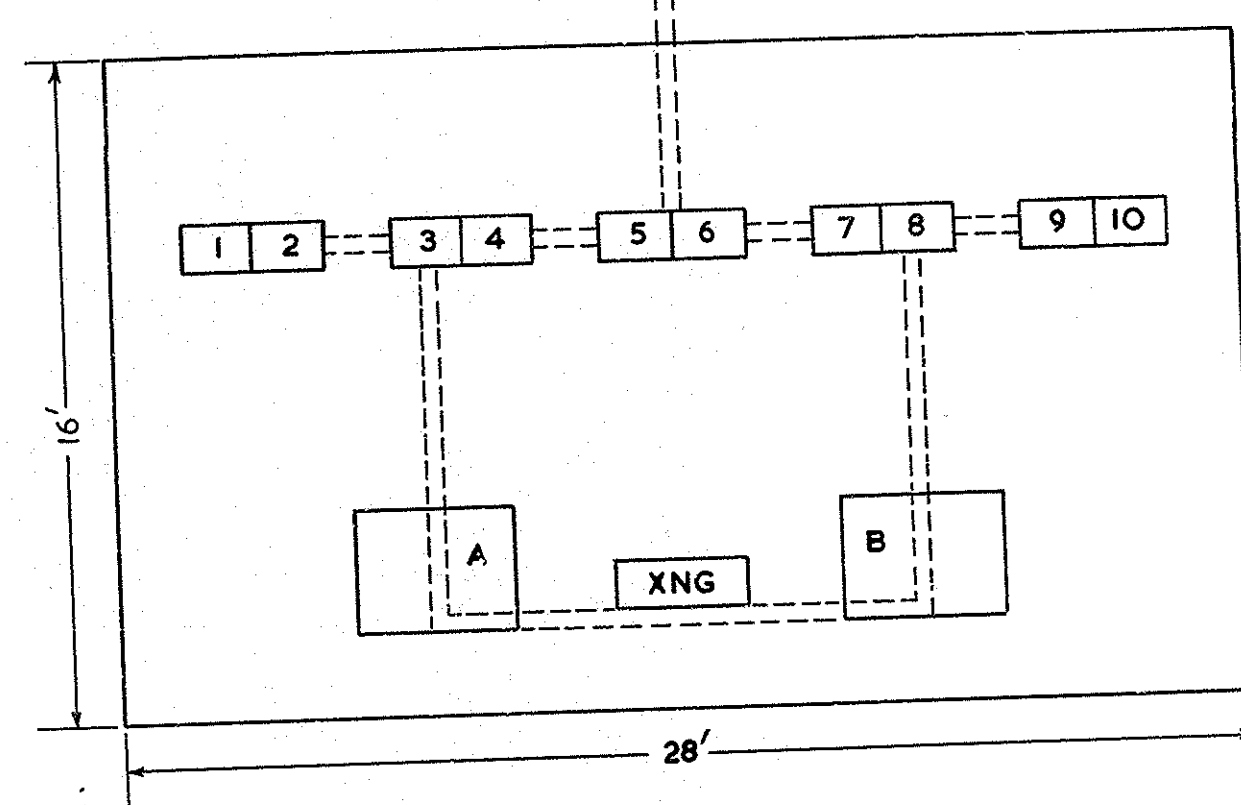
FOR REPORT PURPOSES
DO NOT PRINT THIS SECTION

EX 28851

CLOCK, SPEAKING, MARK II
(BRITISH POST OFFICE)
ALTERNATIVE CLOCK ROOM LAYOUTS
DIAGRAM I



NOTE.
RACK No. 5 MUST BE AT LEAST 3'-6" FROM THE NEAREST WALL
TO PERMIT THE ENTRY OF THE DISPLAY OSCILLOSCOPE TROLLEY.



RACK No.	UNIT
1	OSCILLATOR A
2	OSCILLATOR C
3	CLOCK A
4	
5	COMMON EQUIPMENT
6	
7	CLOCK B
8	
9	COMMON OSCILLATOR EQUIPMENT
10	OSCILLATOR B
A	ANNOUNCING MACHINE FOR CLOCK A
B	ANNOUNCING MACHINE FOR CLOCK B
XNG	TIME SIGNAL GENERATORS

POST OFFICE ENGINEERING DEPT. RESEARCH STATION DOLLIS HILL, LONDON. N.W. 2.	
REFERENCES	
D.O. SER. 367	
CASE NO. 12685	SPEC. ✓
ASSEMBLY DRG. ✓	
APPD. IN RA 2/2	DRN. <i>anf</i> TCD. CKD.
	DATE 13.11.52.
AMENDMENT	SUFFIX
DIMS. 20' & 16' WERE 18' & 14'	A
NOTE ADDED	B
	5.8.1954.
	2.9.1954.
DGM. EX 28851	