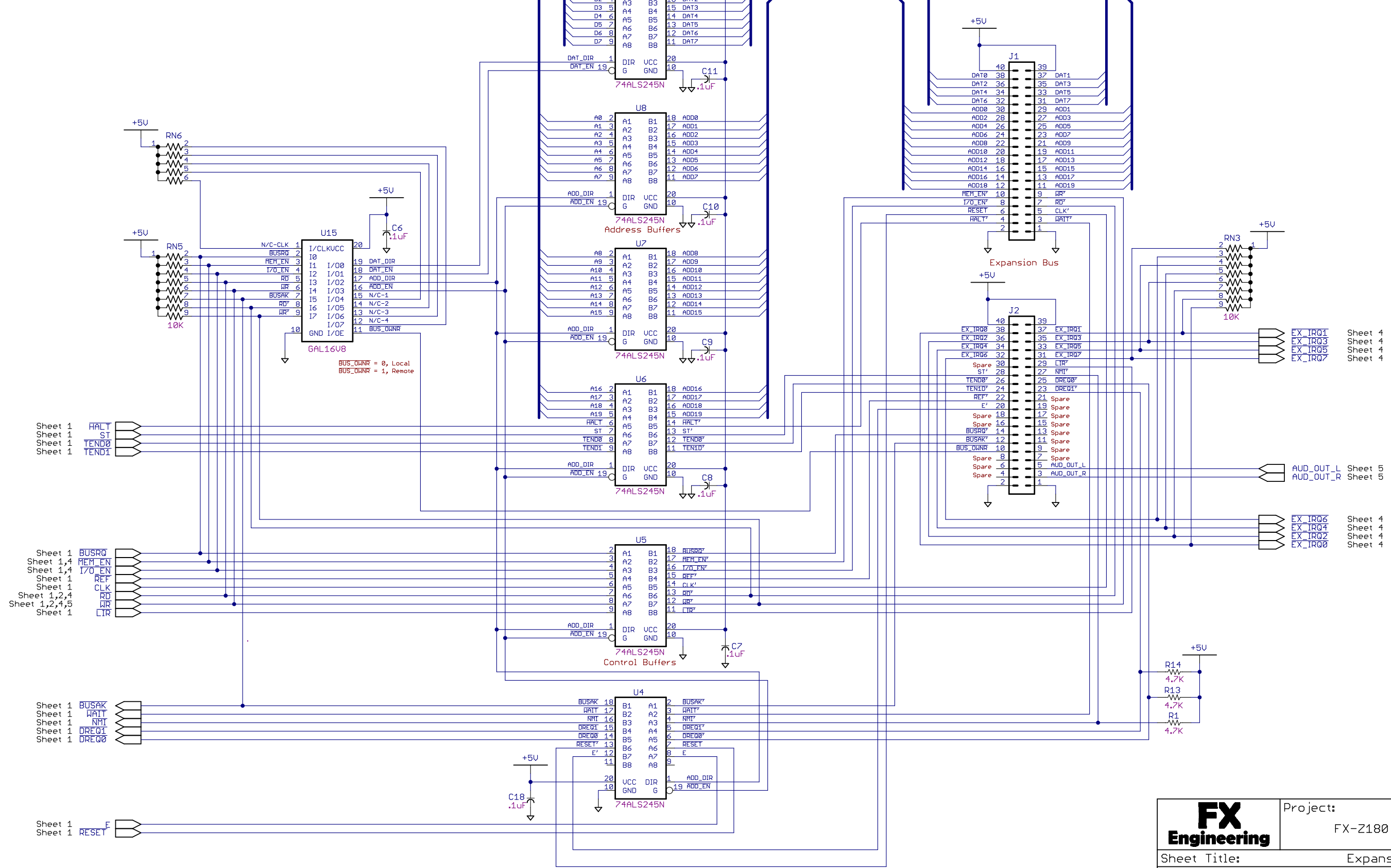


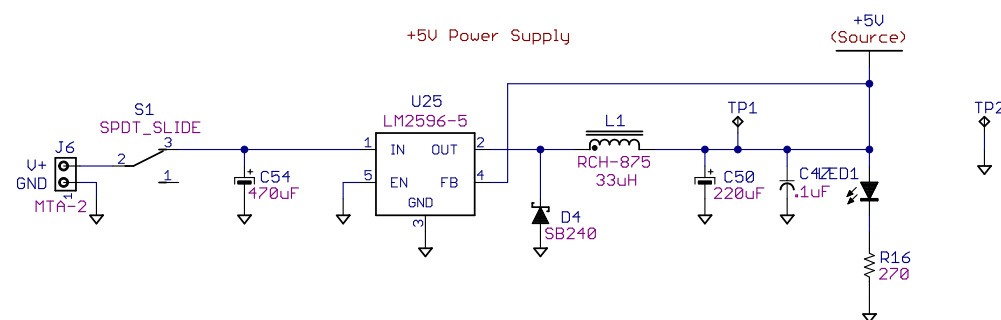
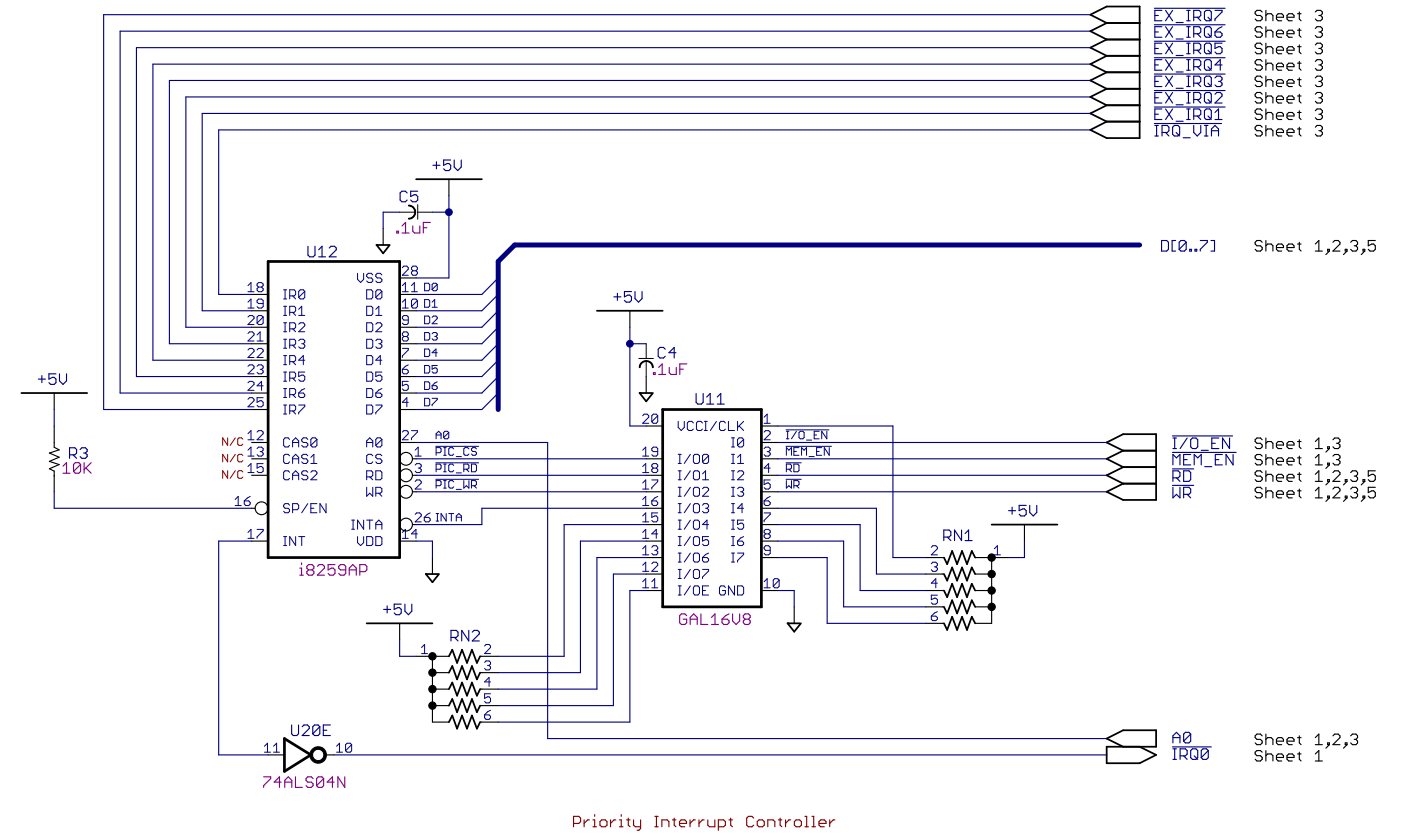
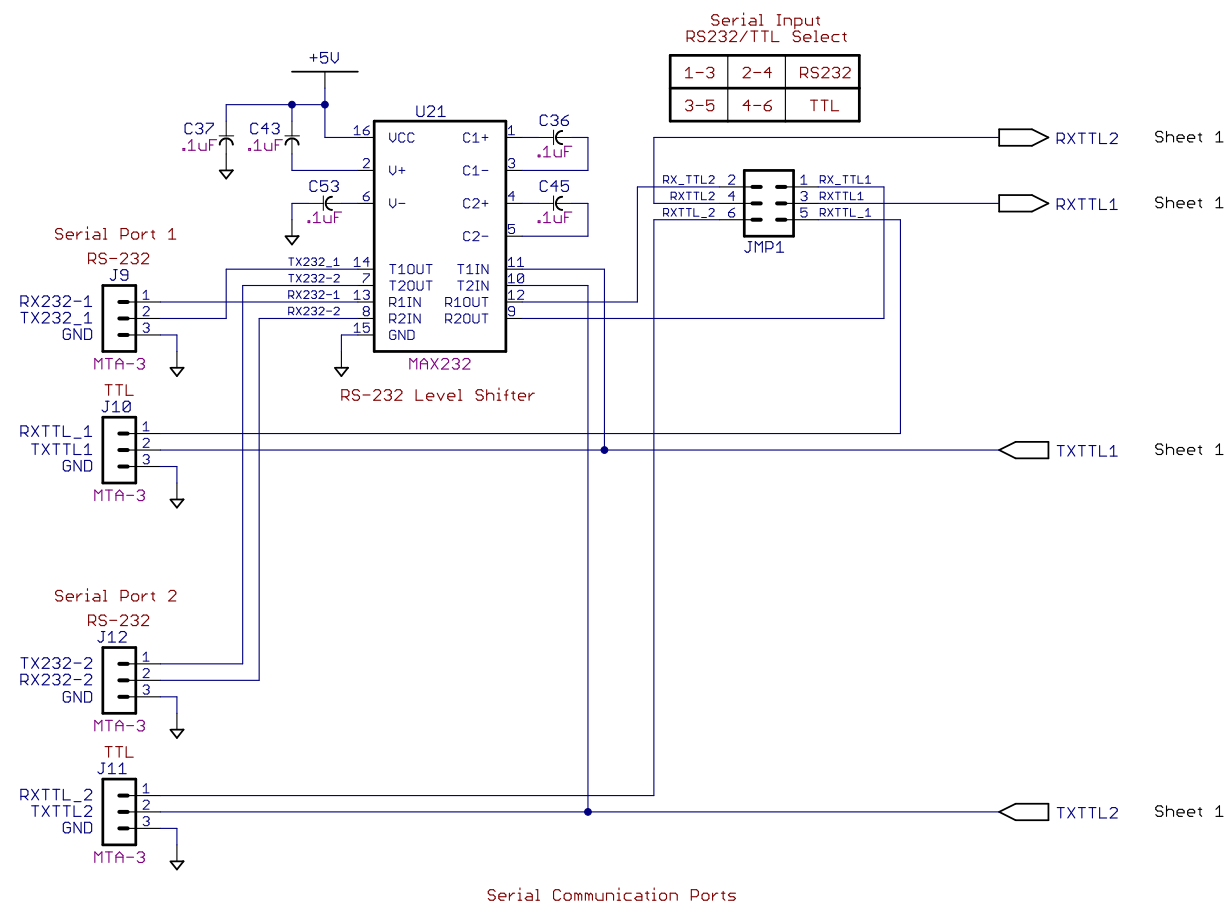
<b>FX</b> Engineering	Project:	
	FX-Z180 Computer	
	Sheet Title: Parallel Ports, RTC & USB Flash	
	Engineer: Ron Owens	
	Drawn By: Ron Owens	
Approved By:		Approved Date:
FX-Z180 Rev A Mar-1-2016		REV: A
Date: 3/5/2016 8:49:30 PM		Sheet: 2/5

Sheet 1, 2, 4 & 5 D[0..7]

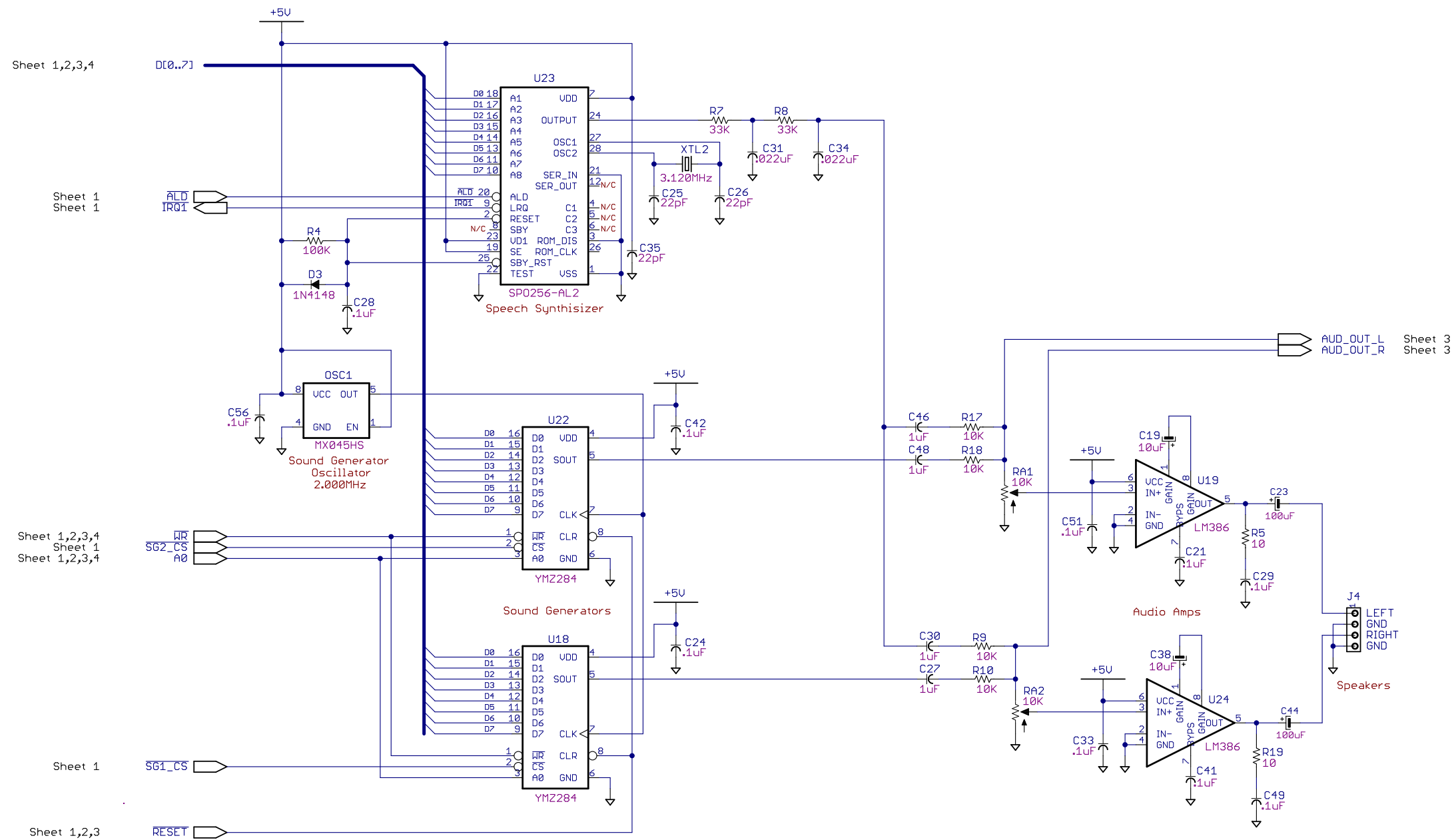
Sheet 1, 2 & 4 A[0..19]



<b>FX</b> Engineering	Project:
	FX-Z180 Computer
	Sheet Title: Expansion Bus
	Engineer: Ron Owens
	Drawn By: Ron Owens
Approved By:	Approved Date:
FX-Z180 Rev A Mar-1-2016	REV: A
Date: 3/5/2016 8:49:30 PM	Sheet: 3/5



<b>FX</b> <b>Engineering</b>	Project:	
	FX-Z180 Computer	
	Sheet Title: Serial I/O & Power Supply	
	Engineer: Ron Owens	
	Drawn By: Ron Owens	
Approved By:		Approved Date:
FX-Z180 Rev A Mar-1-2016		REV: A
Date: 3/5/2016 8:49:30 PM		Sheet: 4/5



<b>FX</b> Engineering	Project:	
	FX-Z180 Computer	
	Sheet Title: Serial I/O & Power Supply	
	Engineer: Ron Owens	
	Drawn By: Ron Owens	
Approved By:		Approved Date:
FX-Z180 Rev A Mar-1-2016		REV: A
Date: 3/5/2016 8:49:30 PM		Sheet: 5/5