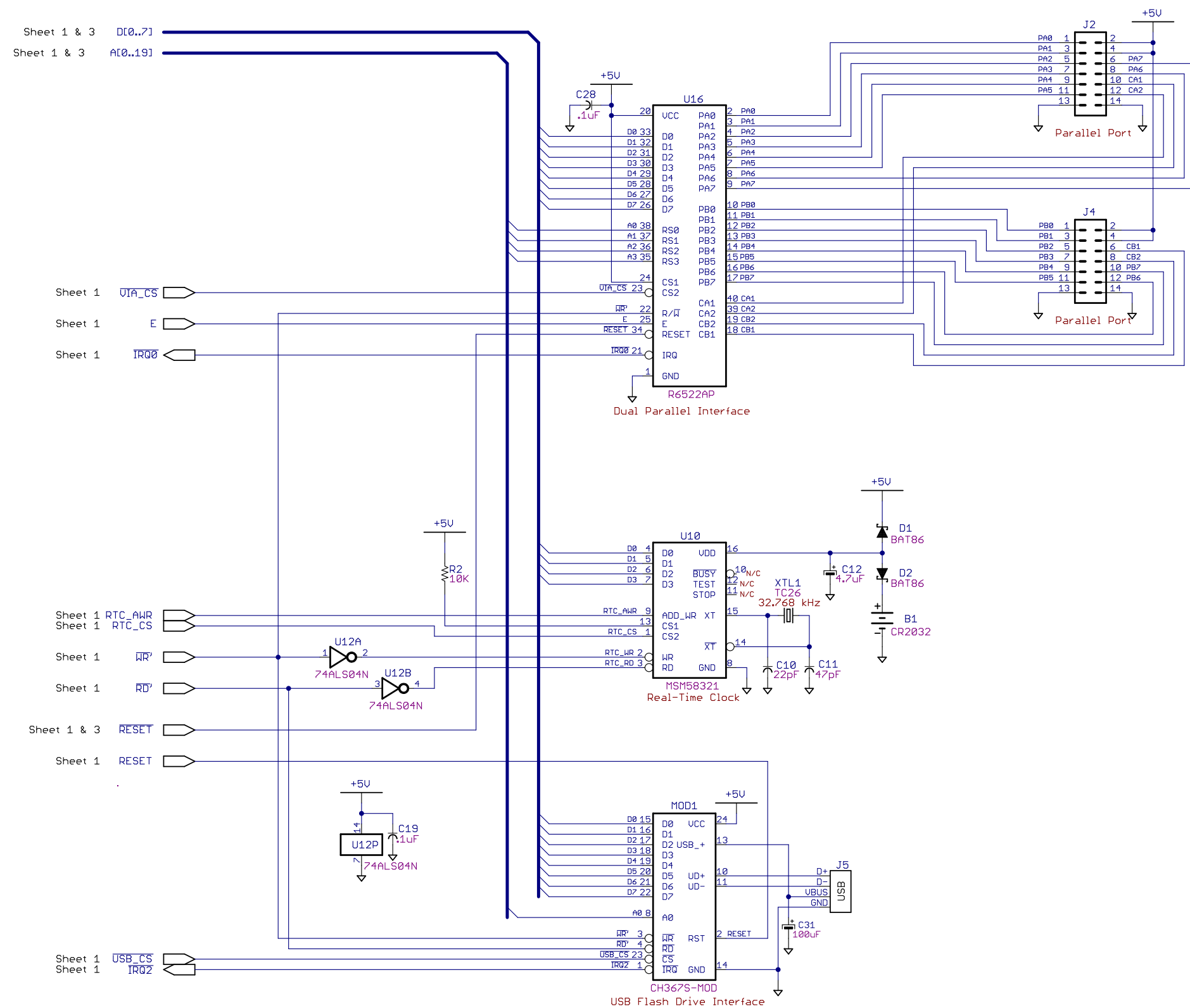


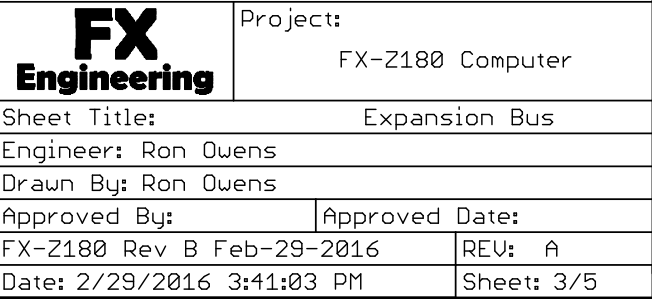
MPU IRQs
 IRQ0 - VIA
 IRQ1 - Speech Synthesizer
 IRQ2 - Flash Drive

I/O Address Map
 I700 0x00 - 0x0F MCU Internal I/O
 I701 0x10 - 0x1F MCU Internal I/O
 I702 0x20 - 0x2F MCU Internal I/O
 I703 0x30 - 0x3F MCU Internal I/O
 I704 0x40 - 0x4F Flash Drive
 I705 0x50 - 0x5F Real-Time Clock
 I706 0x60 - 0x6F Speech Synth./ Sound Gen.
 I707 0x70 - 0x7F Parallel Port

FX Engineering	Project:	
	FX-Z180 Computer	
Sheet Title: MCU, SRAM, & Flash		
Engineer: Ron Owens		
Drawn By: Ron Owens		
Approved By:		Approved Date:
FX-Z180 Rev B Feb-29-2016		REV: A
Date: 2/29/2016 3:41:03 PM		Sheet: 1/5

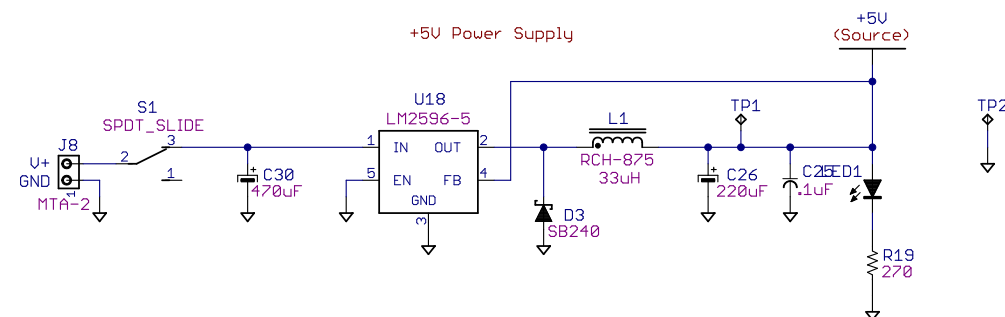
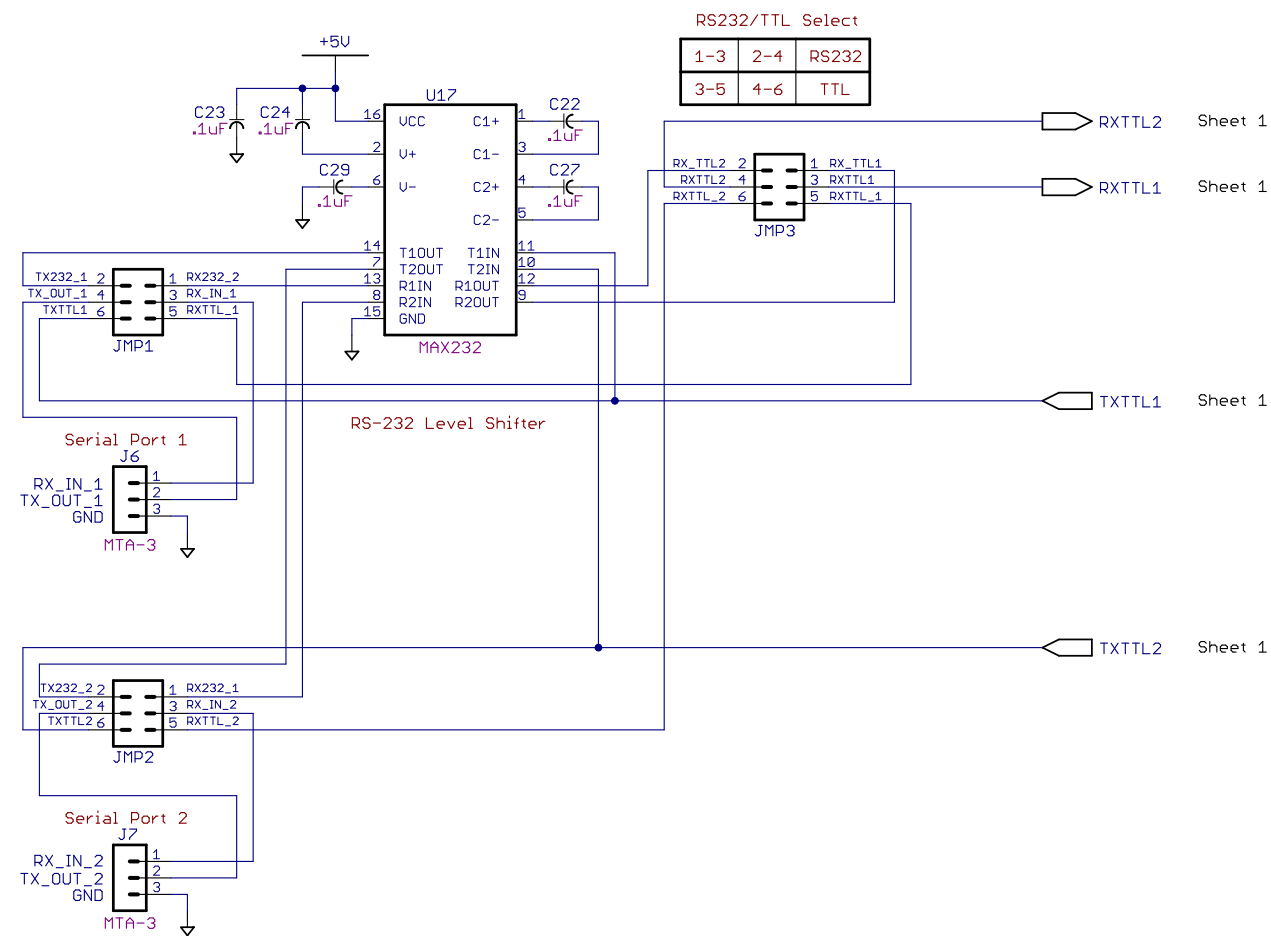


FX Engineering	Project:	
	FX-Z180 Computer	
	Sheet Title: Parallel Ports, RTC & USB Flash	
	Engineer: Ron Owens	
	Drawn By: Ron Owens	
Approved By:		Approved Date:
FX-Z180 Rev B Feb-29-2016		REV: A
Date: 2/29/2016 3:41:03 PM		Sheet: 2/5

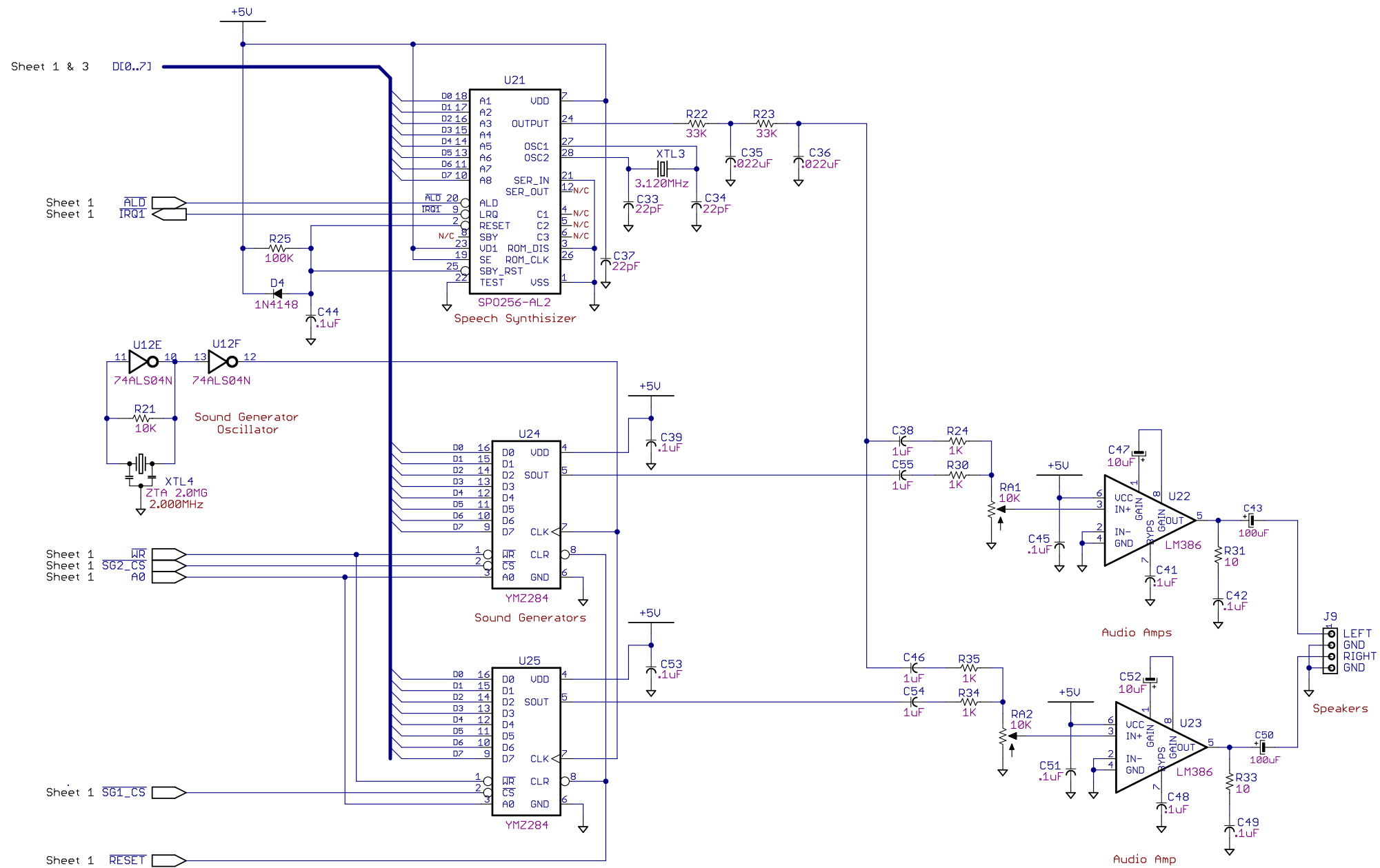


RS232/TTL Select		
1-3	2-4	RS232
3-5	4-6	TTL

RS232/TTL Select		
1-3	2-4	RS232
3-5	4-6	TTL



FX Engineering	Project:	
	FX-Z180 Computer	
	Sheet Title: Serial I/O & Power Supply	
	Engineer: Ron Owens	
	Drawn By: Ron Owens	
Approved By:		Approved Date:
FX-Z180 Rev B Feb-29-2016		REV: A
Date: 2/29/2016 3:41:03 PM		Sheet: 4/5



FX Engineering	Project:	
	FX-Z180 Computer	
	Sheet Title: Serial I/O & Power Supply	
	Engineer: Ron Owens	
	Drawn By: Ron Owens	
Approved By:		Approved Date:
FX-Z180 Rev B Feb-29-2016		REV: A
Date: 2/29/2016 3:41:03 PM		Sheet: 5/5