



Endicott Research Group, Inc.
2601 Wayne St., Endicott, NY 13760
607-754-9187 Fax 607-754-9255
<http://www.ergpower.com>

E2577VF

Specifications and Applications Information

3/29/06

Preliminary

DC to DC/AC Converter

The ERG Vf Series is a unique Series of DC to DC/AC converter which provides 1 positive DC output voltage and 1 center-tapped AC voltage for powering Vacuum Fluorescent Displays.

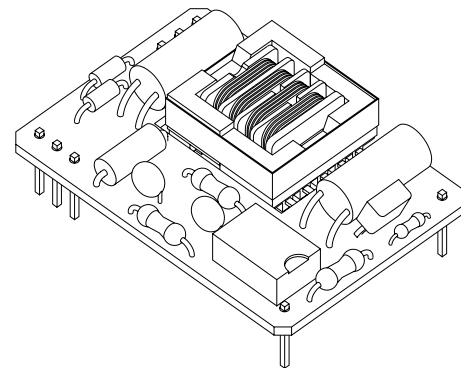
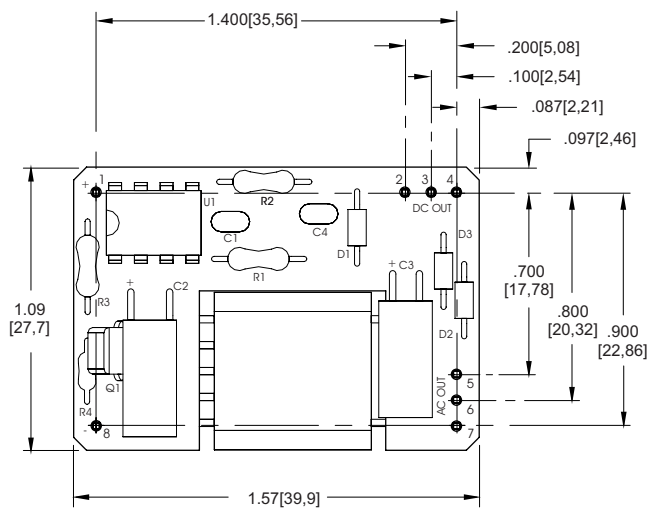
This closed-loop power supply provides stable output voltages over a wide input voltage range.

Designed to be a rugged drop in replacement for imported power supplies, the Vf Series can also be tailored to meet new project requirements.

Key Features:

- ✓ Made in USA
- ✓ Drop-in Replacement
- ✓ Short Lead Time

Package Configuration



1. Vin(+)
2. N/C
3. N/A
4. Dc1(+)
5. AC
6. CT
7. AC
8. Common



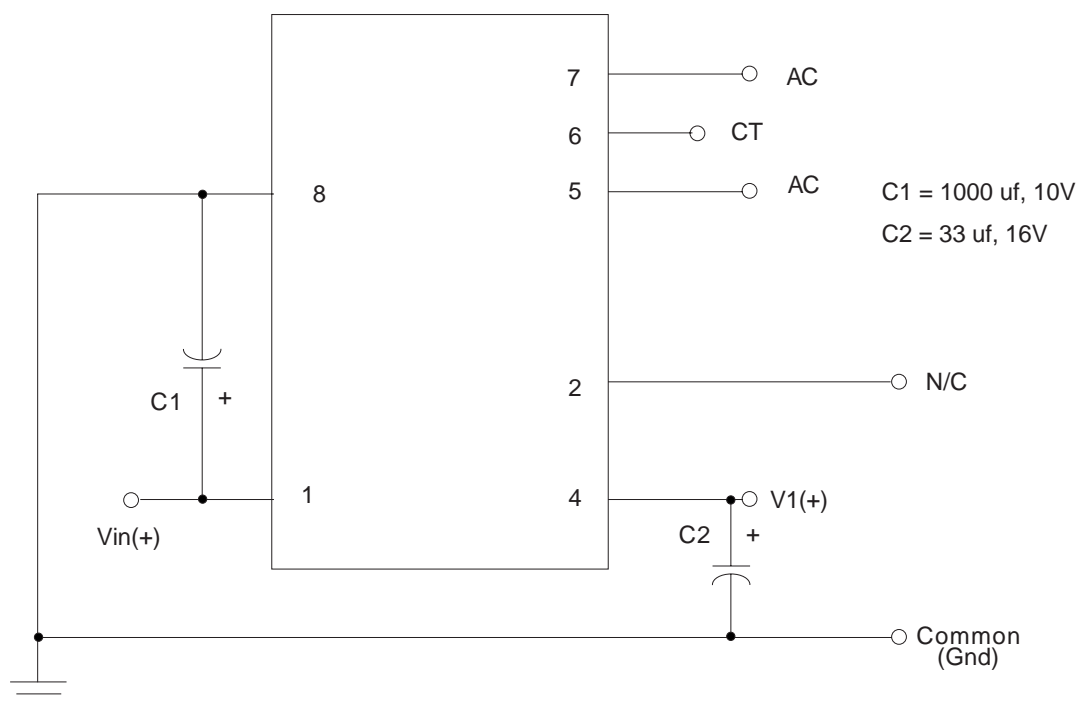
E2577VF

Electrical Characteristics

Characteristic	Symbol	Min	Typ	Max	Units
Input Voltage Range	Vin	4.5	5.0	5.5	Vdc
Output Voltage Range **	+V1	39	42	44	Vdc
	V2	N/A	N/A	N/A	
	V3	N/A	N/A	N/A	
Filament Voltage Range *	Ef	4.7	5.5	6.3	Vrms
Output Current	I1	8	20	38.6	mA _{dc}
	I2	N/A	N/A	N/A	
	I3	N/A	N/A	N/A	
Filament Current	If	-	120	-	mA _{ac}
Input Current *	I _{in}	-	570	-	mA _{dc}

* When output currents on V1, V2 and V3 are @ typical.

** When output currents are within ranges specified.



Endicott Research Group, Inc.

2601 Wayne St., Endicott, NY 13760

607-754-9187 Fax 607-754-9255

<http://www.ergpower.com>