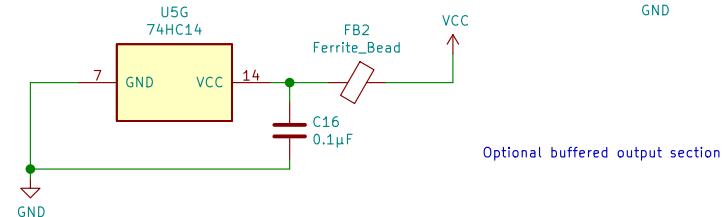
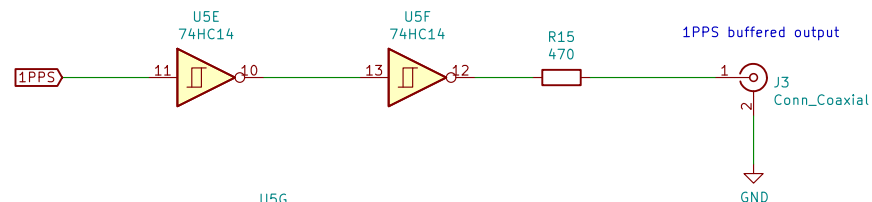
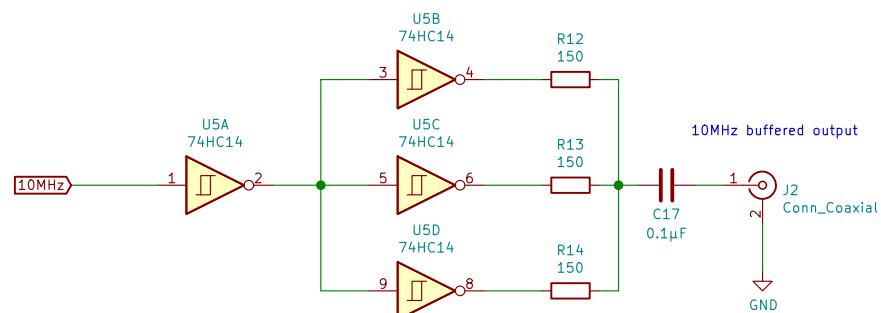
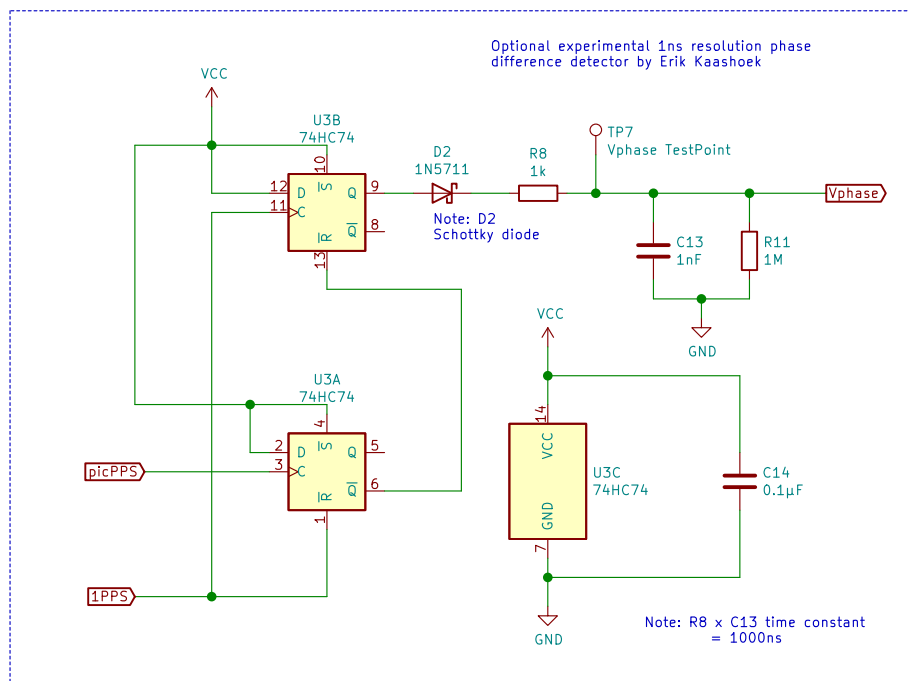
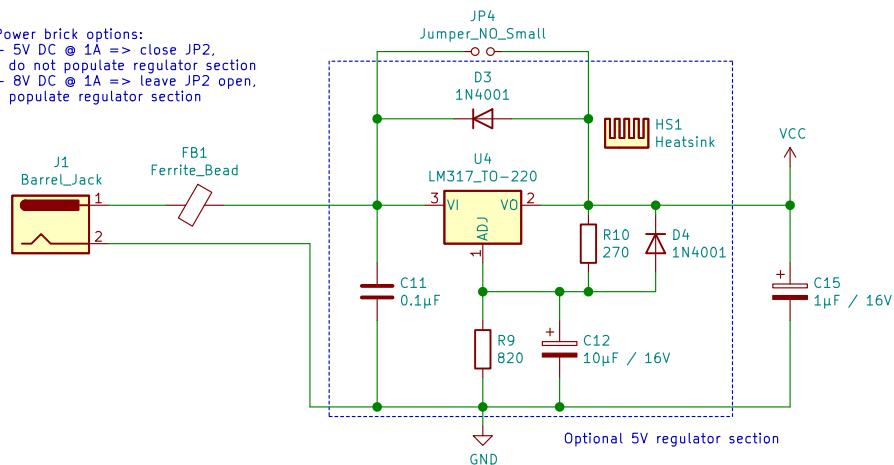


Power brick options:  
 - 5V DC @ 1A => close JP2,  
 do not populate regulator section  
 - 8V DC @ 1A => leave JP2 open,  
 populate regulator section



Sheet: GPSDO Extras 2

File: GPSDO-extras2.sch

- H1 MountingHole
- H2 MountingHole
- H3 MountingHole
- H4 MountingHole
- H5 MountingHole

STM32 GPSDO by AndrewBCN  
 Power supply, output buffers and  
 1ns resolution phase detector



Sheet: /GPSDO Extras/  
 File: GPSDO-extras.sch

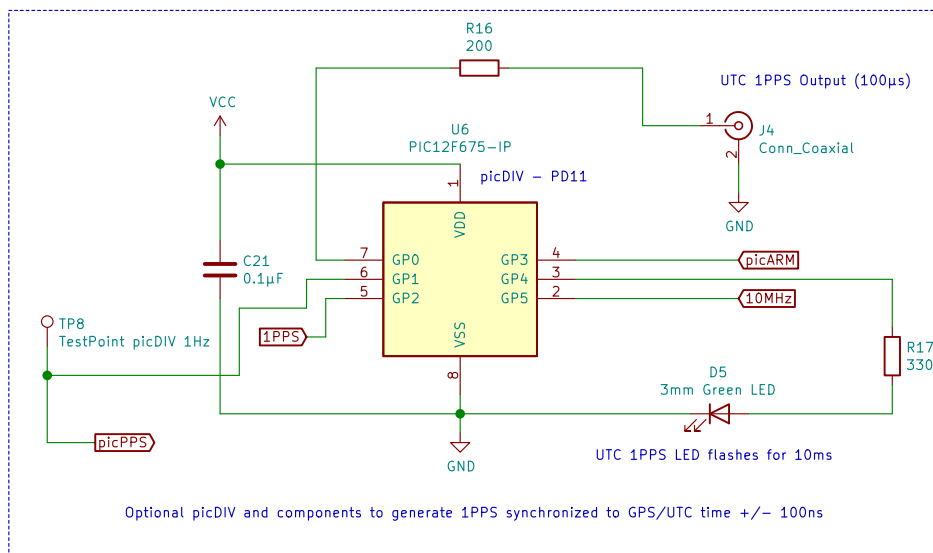
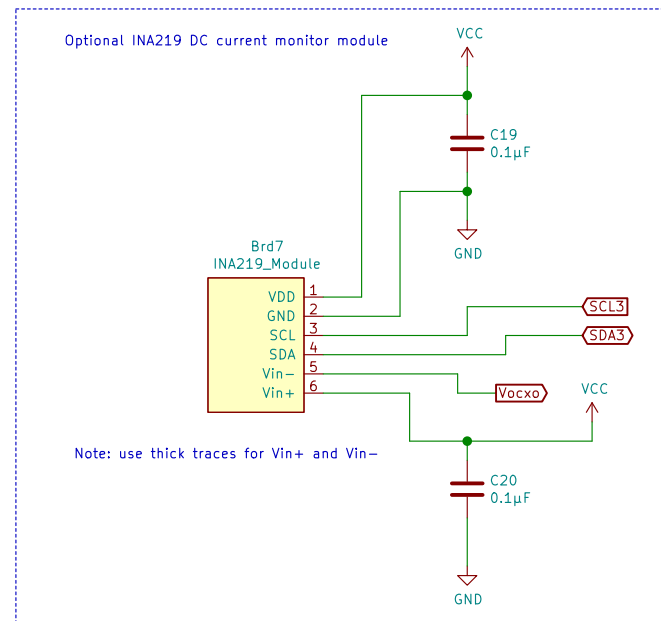
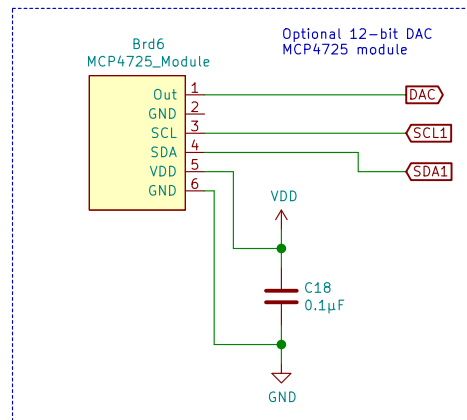
Title: STM32 GPSDO

Size: A4 Date: 2021-10-02

KiCad E.D.A. eeschema 5.1.10-88a1d61d5890ubuntu20.10.1

Rev: 0.6

Id: 2/3



STM32 GPSDO by AndrewBCN  
Optional 12-bit DAC module  
Optional OCXO DC current monitor module



Sheet: /GPSDO Extras/GPSDO Extras 2/  
File: GPSDO-extras2.sch

**Title: STM32 GPSDO**

Size: A4

Date: 2021-10-02

Rev: 0.6

KiCad E.D.A. eeschema 5.1.10-88a1d61d5890ubuntu20.10.1

Id: 3/3