

Figure 4.1.1 MODEL 513 BLOCK DIAGRAM

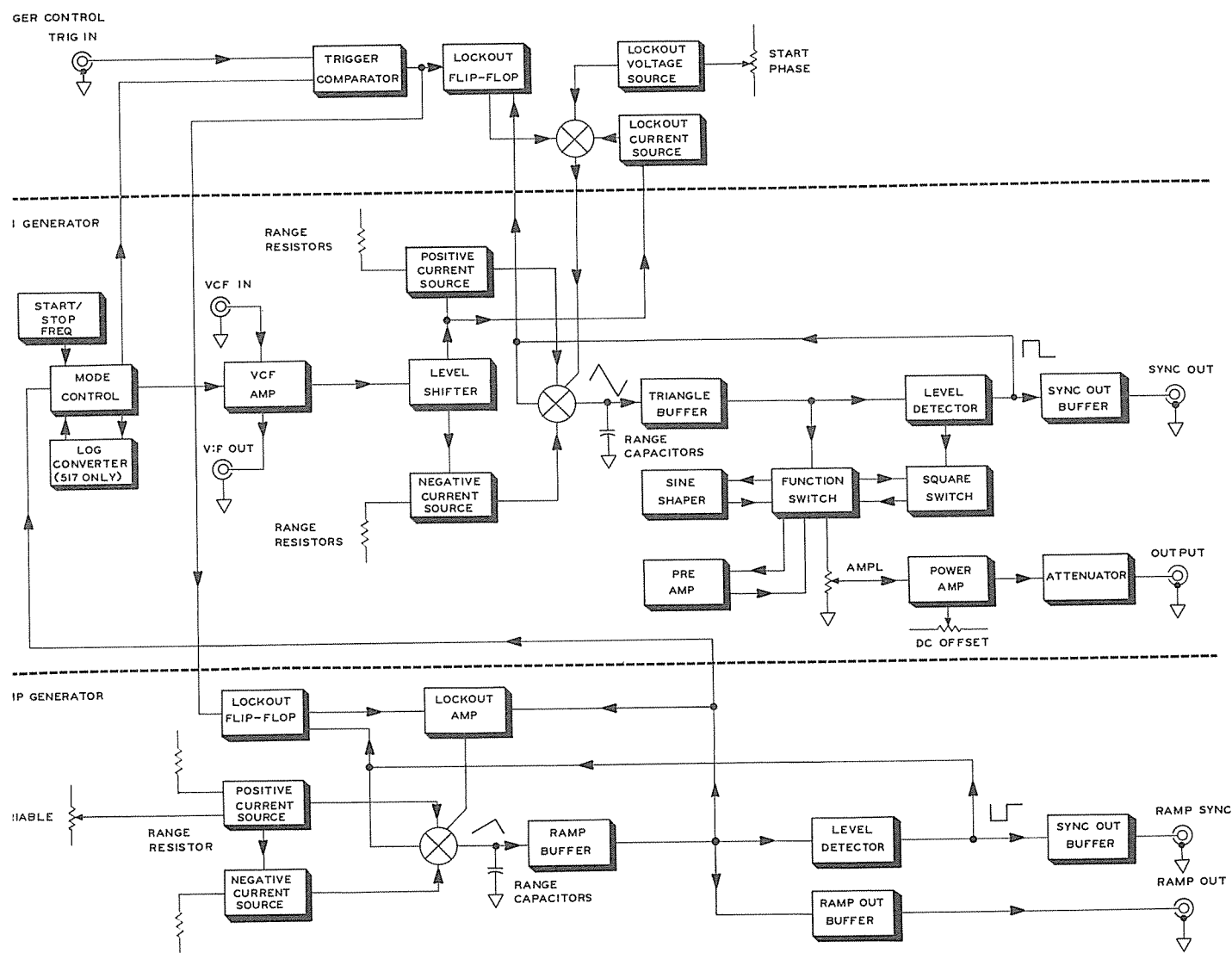


Figure 4.1.2 MODELS 516 AND 517 BLOCK DIAGRAM

4.3 USE OF TROUBLE SHOOTING TREES (Fig.4.3.1 and 4.3.2)

The trouble shooting trees are designed to point to the malfunctioning circuit block. Beyond this, refer to the proper schematic and check voltages and waveform at the indicated points to determine the actual problem. Start with the following initial control setting.

On all models.

START FREQ (MULTIPLIER)	1.0
RANGE	1K
FUNCTION	TRIANGLE
AMPLITUDE	FULL CW
OFFSET	DISENGAGED
ATTENUATOR	DISENGAGED

X — Models 516 and 517 only.

MODE	RUN
START PHASE	CENTERED
STOP FREQ	.9X
RAMP TIME	1msec
RAMP VARIABLE	FULL CW
RAMP RUN/TRIG	ENGAGED
RAMP CAL	DISENGAGED

Model 517 only.

LIN/LOG	DISENGAGED
---------	------------

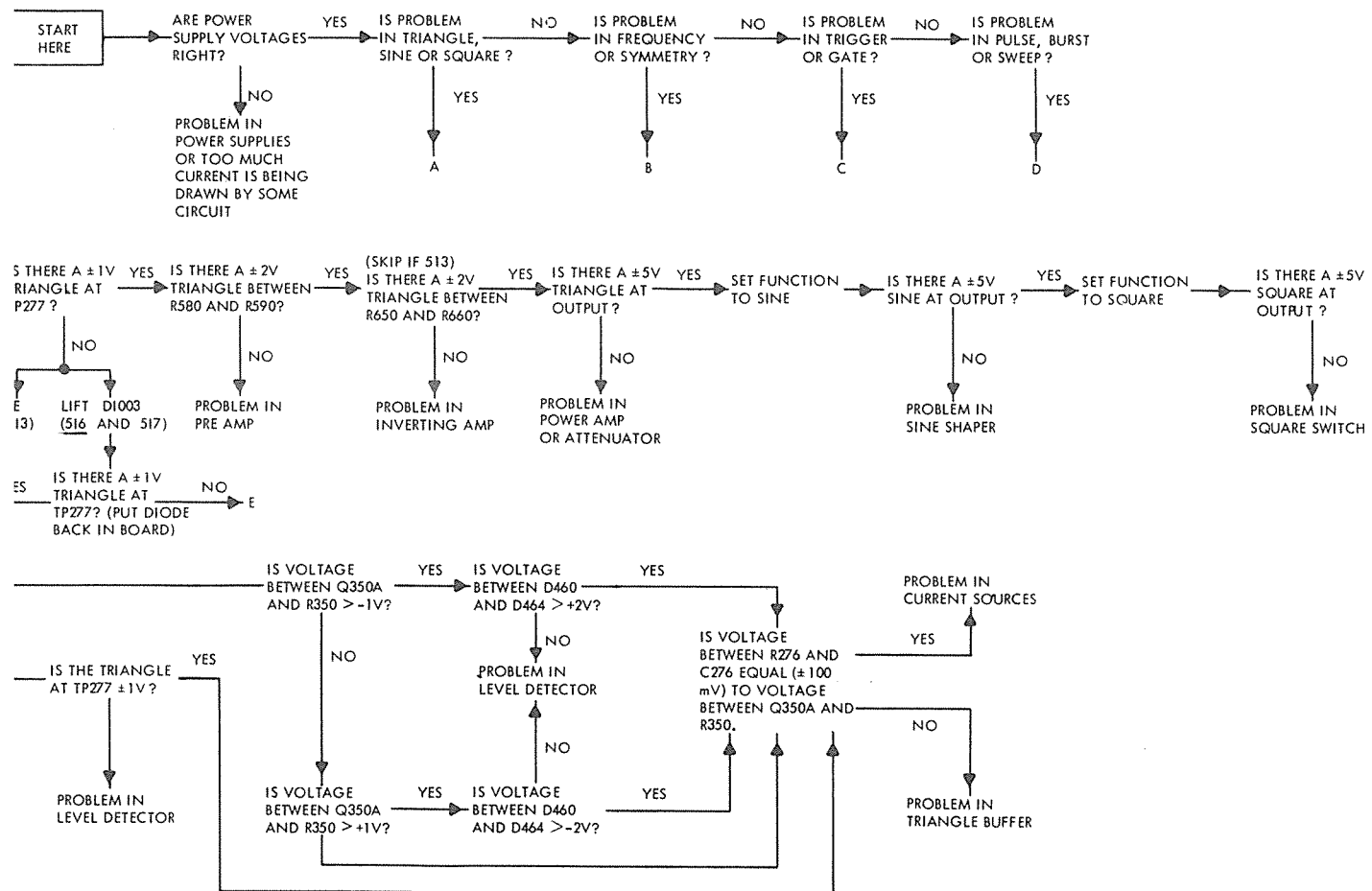


Figure 4.2.1 TROUBLE SHOOTING TREE, page 1

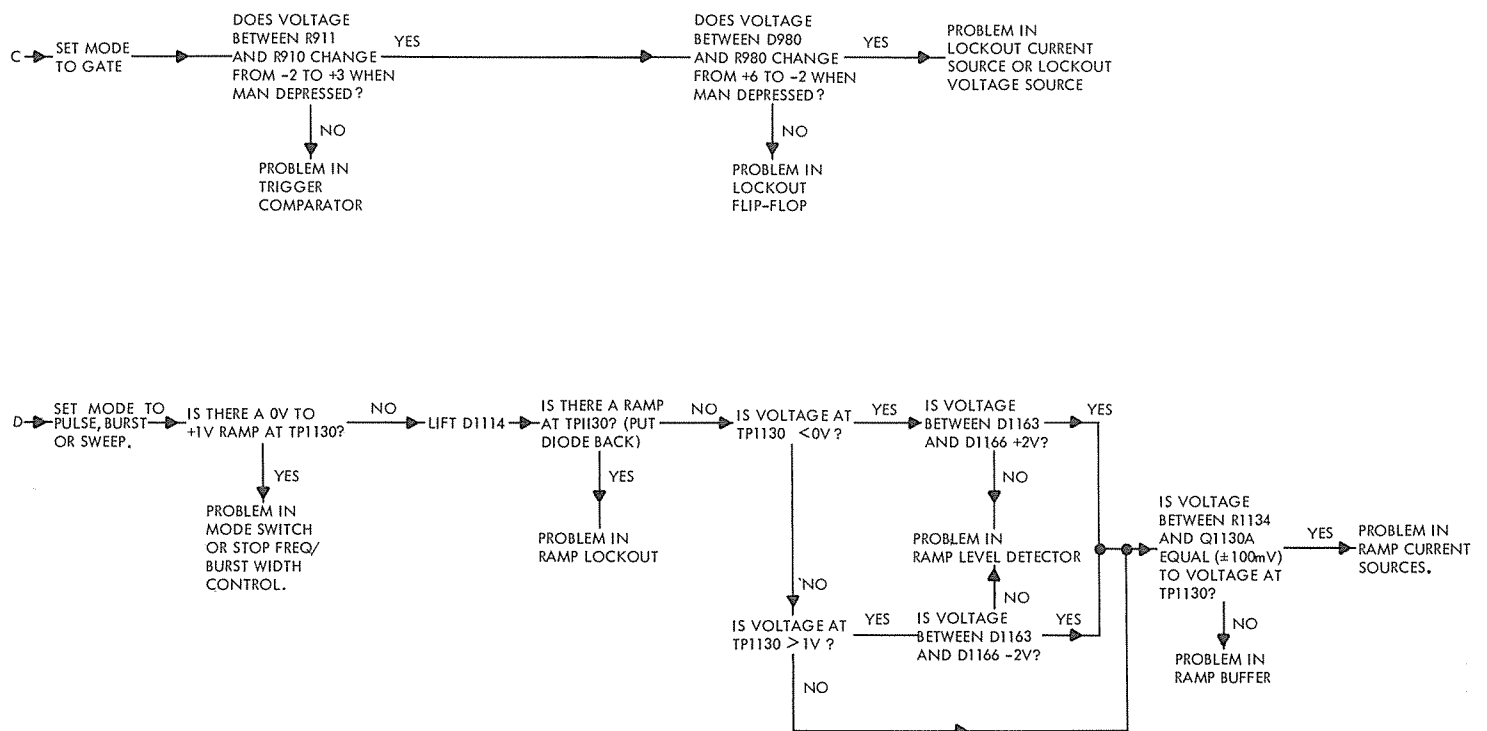


Figure 4.2.2 TROUBLE SHOOTING TREE, page 2

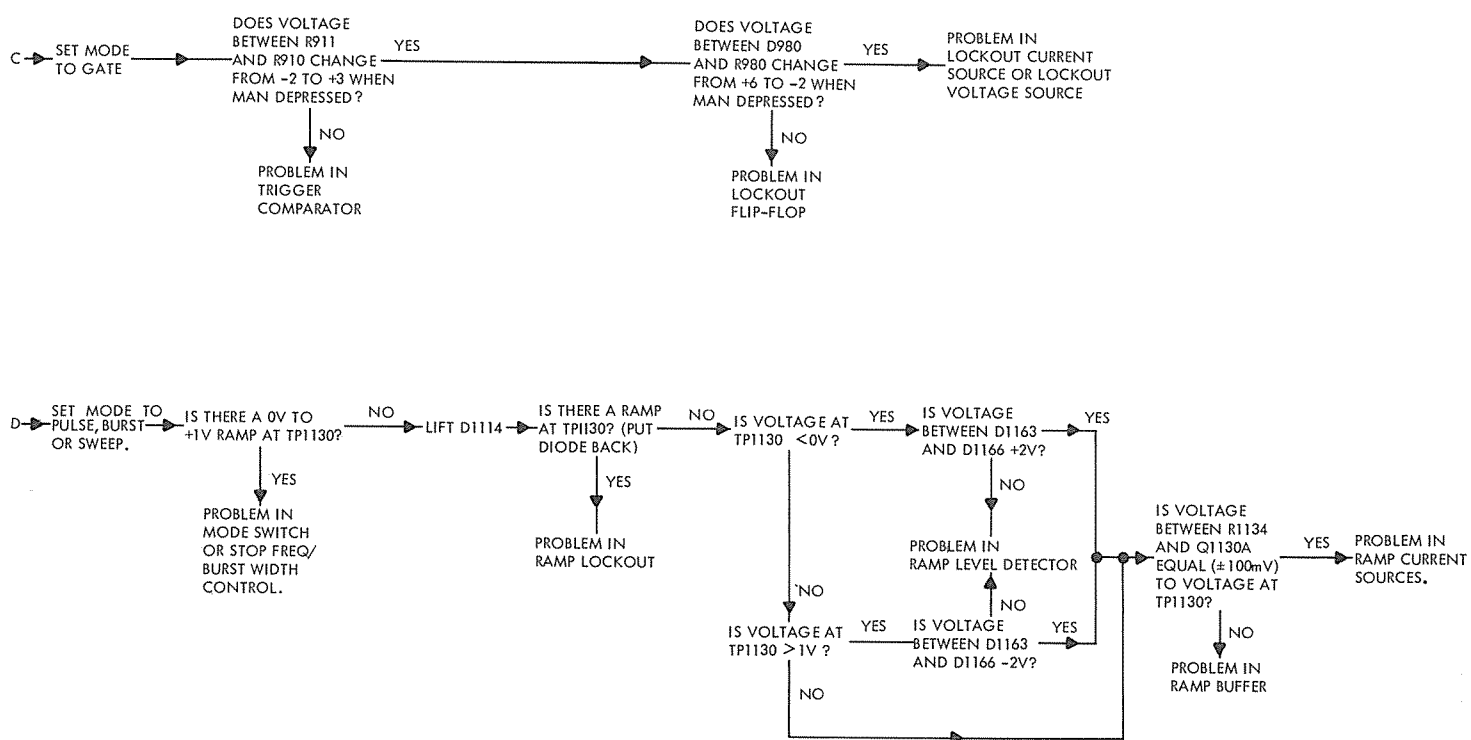


Figure 4.2.2 TROUBLE SHOOTING TREE, page 2

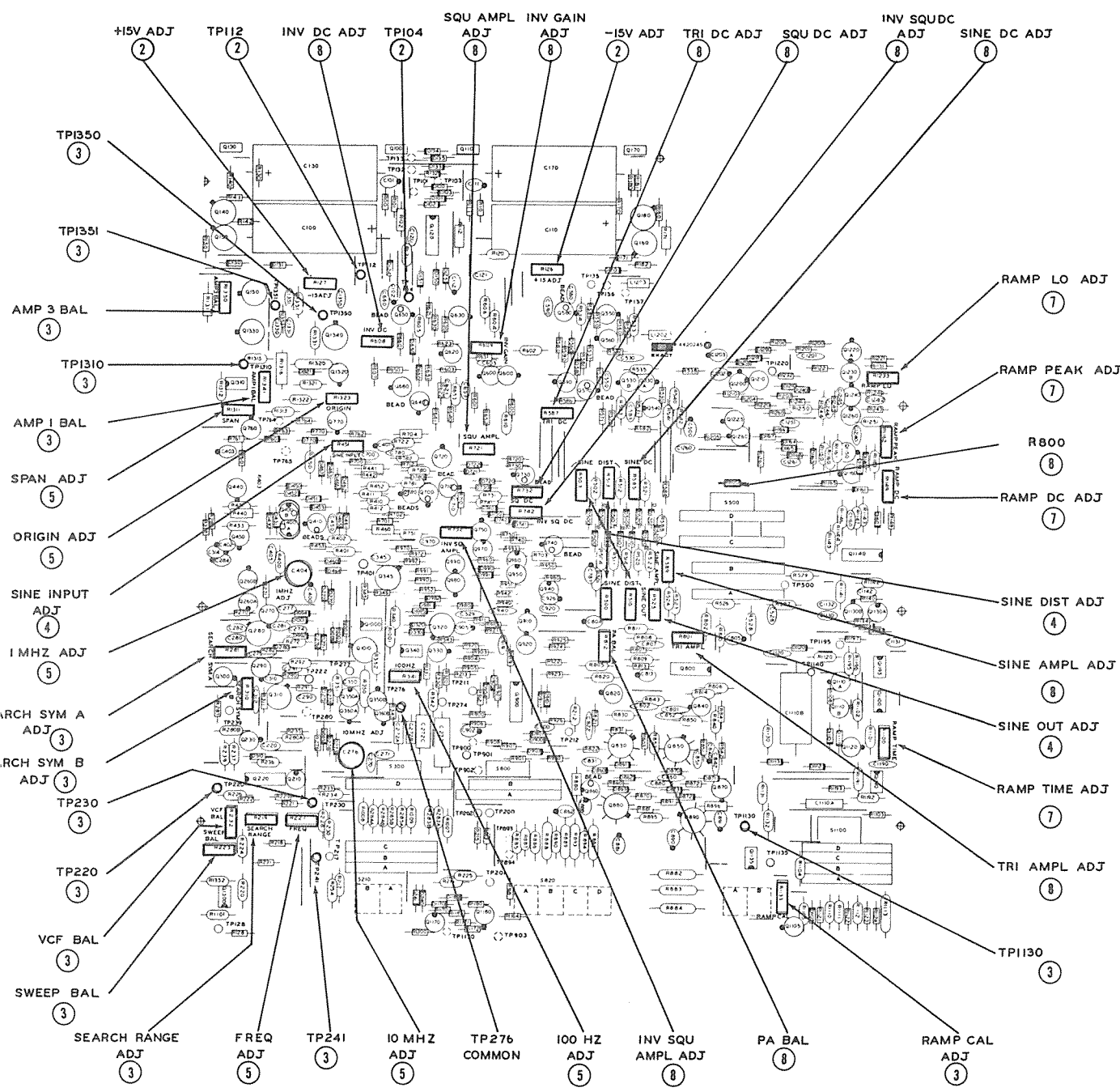


Figure 3.0.1 ADJUSTMENT LOCATION DETAIL