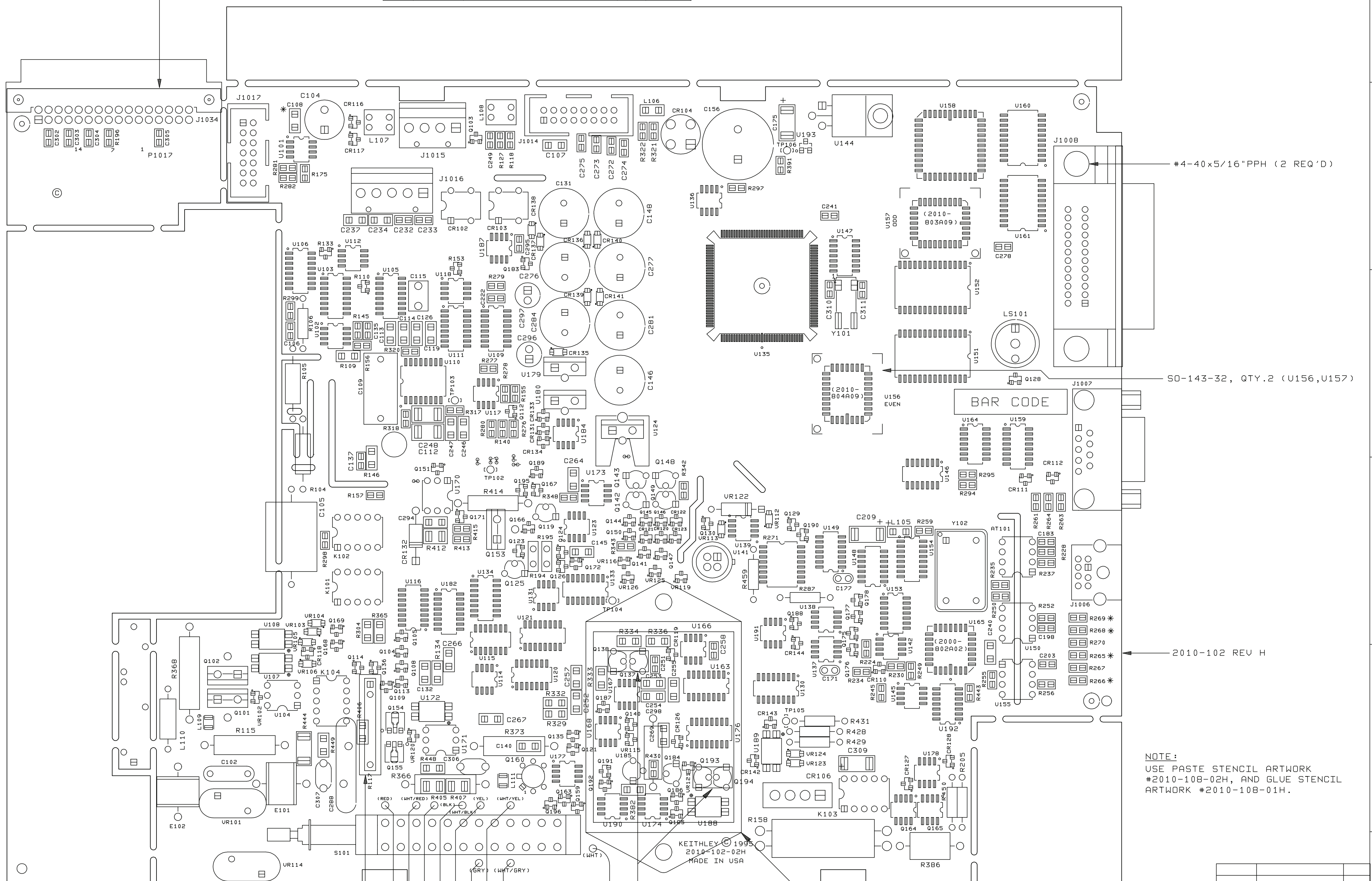


A		B		C		D		E		F		G								
052-0102		ON		E1	19809	SC-55-2 WAS SC-55-12, SC-55-0 WAS SC-55-10, SC-55-4 WAS SC-55-14, SC-55-8 WAS SC-55-18		SZ	7-28-97	D1	18977	(2010-803A08) WAS (2010-803A06) (2010-804A08) WAS (2010-804A06)		SZ	9-9-96	LTR.	ECC NO.	REVISION	ENG.	DATE
				F	20045	ARTWORK WAS REV E, ADDED (2) C-465-22P (C310, C311) NEAR Y101		SZ	10/22/97	D2	19163	ADDED C309 DO NOT INSTALL		SZ	10-11-96	C	18099	RELEASED	SZ	12-14-95
				F1	20929	2000-190 INSTALLED AT LOCATION R117		SZ	3-5-98	D3	19284	REMOVED BAR CODE LABEL		SZ	11-6-96	C1	18256	(2010-803A04) WAS (2010-803A01)	SZ	1-26-96
				G	20798	ARTWORK WAS REV F, ADDED C312, R459, R460, R461, R462, Q195, Q196 VALUE CHANGED R249, R384		SZ	6-30-98	D4	19743	(2010-803A09) WAS (2010-803A08) (2010-804A09) WAS (2010-804A08)		SZ	4-2-97	C2	18330	(2010-803A05) WAS (2010-803A04) (2010-804A05) WAS (2010-804A04)	SZ	2-26-96
				H	22227	ARTWORK WAS REV G, ADDED IC-1297, U144 WAS IC-962, REMOVED C191		DHC	6-22-99	E	19479	ARTWORK WAS REV D, WIDENED TRACE AT SW101 PIN 4, R430 WAS R-418-100K, R427 WAS R-418-4.99K SEE PAGE 2		SZ	5-14-97	C3	18720	2000-802A02 WAS 2000-802A01	AJS	5-23-96
										D	18520	ARTWORK WAS REV C. REVISED PARTS		SZ				SZ	6-5-96	

2010-162 REV A
TOP SIDE COMPONENTS



#4-40x5/16" PPH (2 REQ'D)

50-143-32, QTY.2 (U156, U157)

2010-102 REV H

NOTE:
USE PASTE STENCIL ARTWORK #2010-108-02H, AND GLUE STENCIL ARTWORK #2010-108-01H.

* DO NOT POPULATE THE FOLLOWING PARTS:
C108, C309, R265, R266, R268 AND R269.

2000-190
FOR MORE COMPONENT INFORMATION REFER TO 2010 PRODUCT STRUCTURE.

- SC-55-2 & CS-760
- SC-55-2 & CS-760
- SC-55-0 & CS-760
- SC-55-0 & CS-760
- SC-55-4 & CS-760
- SC-55-8 & CS-760
- SC-55-4 & CS-760
- SC-55-8 & CS-760

SP-5
SC-142-9

TX-17-1/4"x5/16"
SHRINK TUBING

CN-68, SHIELD
#4-40x3/8" PPHSEM
(2 REQ'D)

DO NOT SCALE THIS DRAWING		DIMENSIONAL TOLERANCES UNLESS OTHERWISE SPECIFIED		DATE 6/21/95	SCALE 3:2	TITLE COMPONENT LAYOUT, 2010 PANEL	
KEITHLEY KEITHLEY INSTRUMENTS INC. CLEVELAND, OHIO 44139		XX±.010	ANG.±1°	DRN. MAH	ENG. APPR. CJM	NO. 2010-250	
CONFIDENTIAL PROPRIETARY		XXX±.005	FRAC.±1/64	MATERIAL		USED ON	
		SURFACE MAX. 63		FINISH			