

Samsung NZ64H57477K Induction Hob repair

rev1

1 failure description

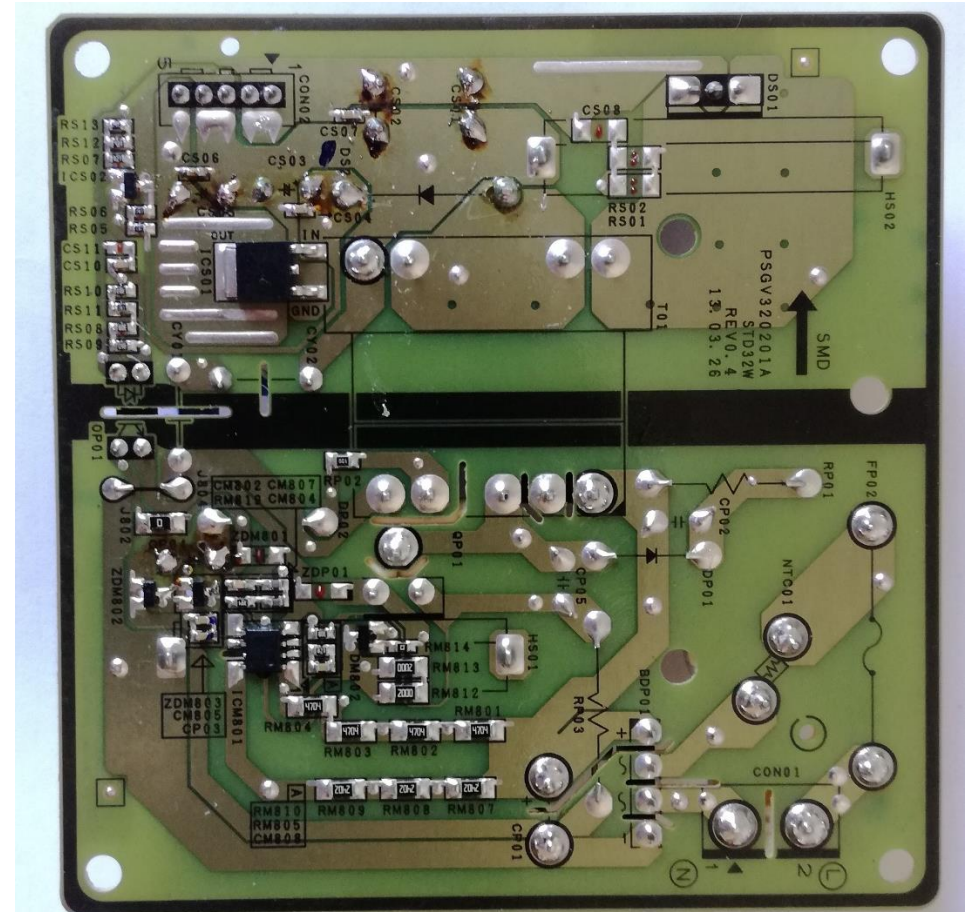
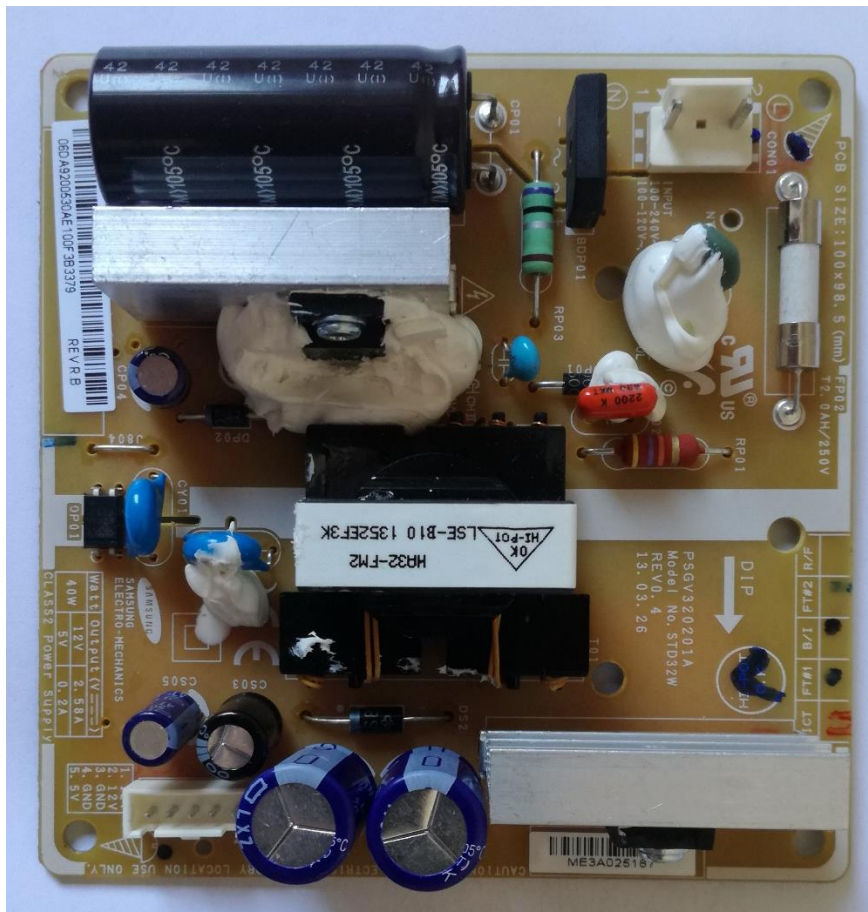
The hob doesn't switch on when touching the power button. No response. No LEDs or something lights up.

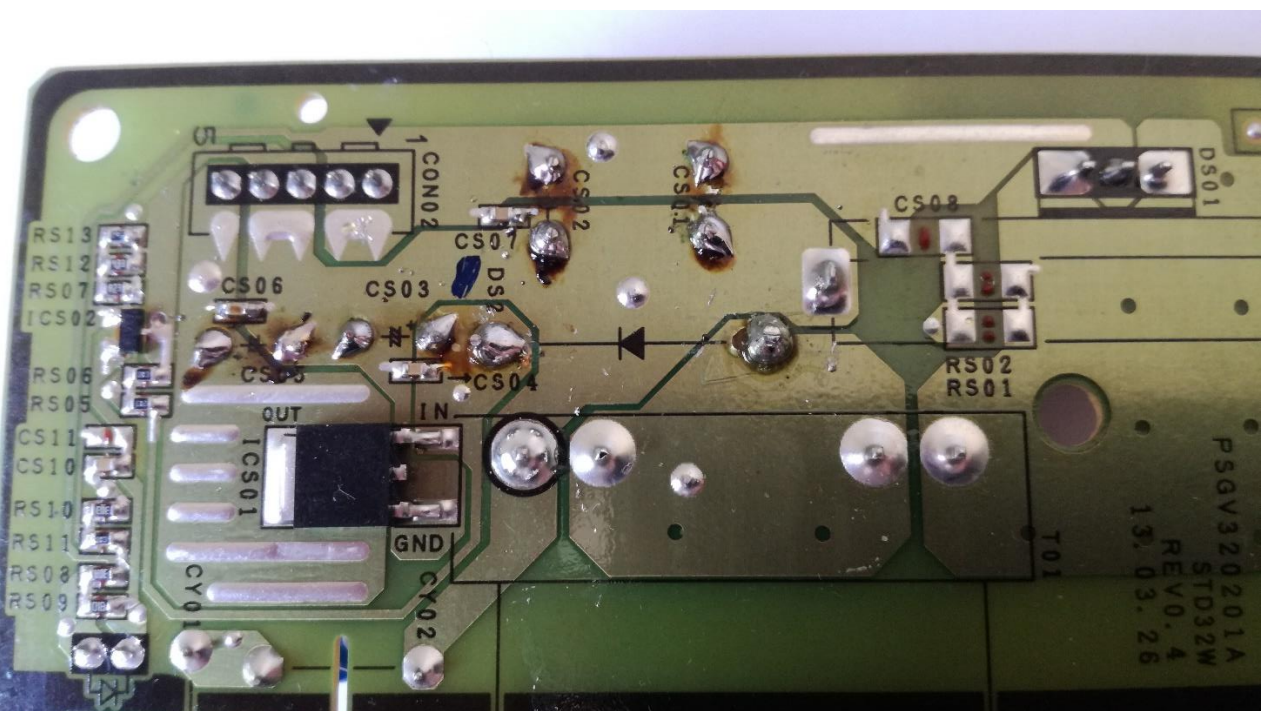
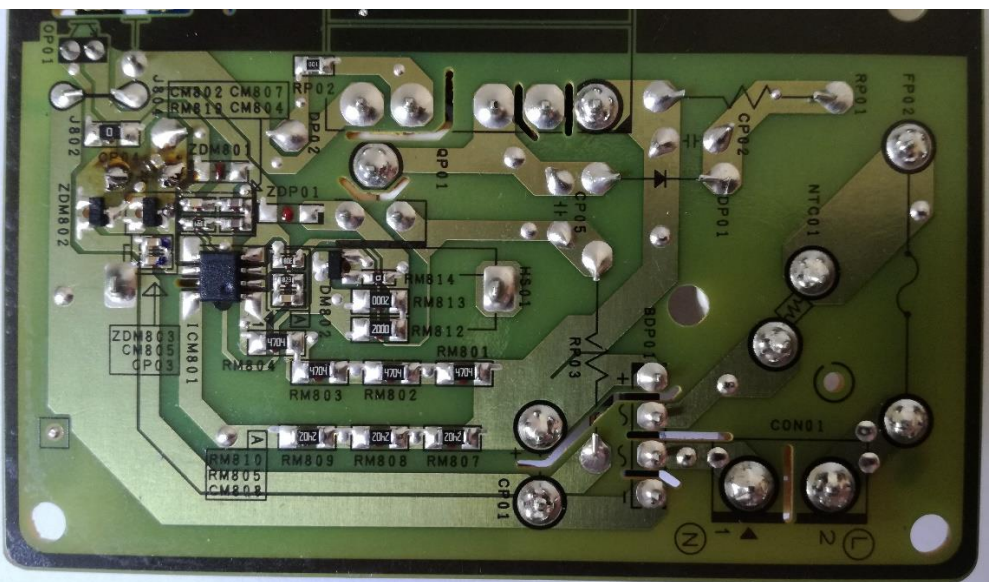
2 power supply module

2.1 description

convert 230V AC from CON01 into 12V and 5V DC on CON02

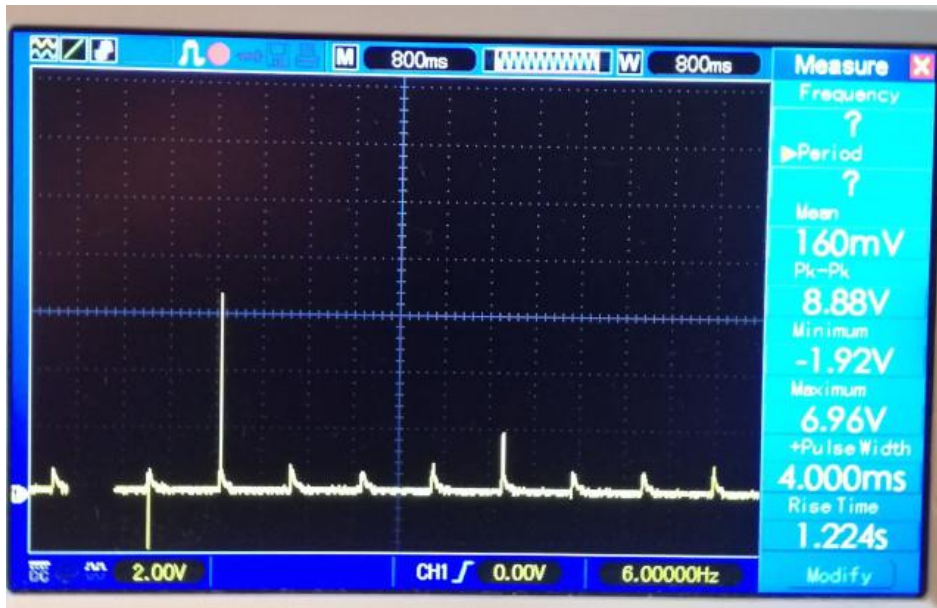
2.2 pics





2.3 Initial Measurement with no Load on DC Outputs

2.3.1 5V rail



2.3.2 12V rails



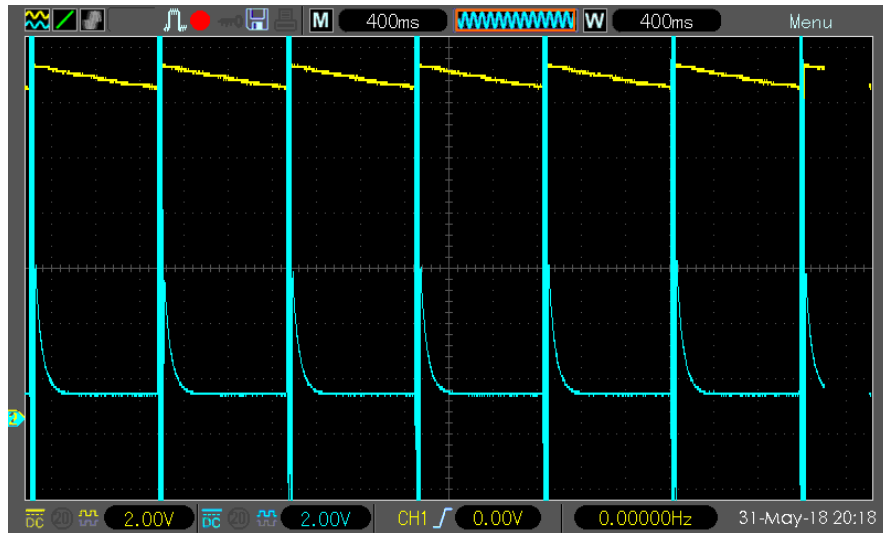
2.4 repair steps

1. replacement of all electrolytic capacitors
 - a. CP04: originally 50V/47u/105° with 50V/47u/105° LXZ series (http://cdn-reichelt.de/documents/datenblatt/B300/ELXZ_DS.pdf)
 - b. CS05: originally 50V/47u/105° with 50V/47u/105° LXZ series (http://cdn-reichelt.de/documents/datenblatt/B300/ELXZ_DS.pdf)
 - c. CS03: originally ?/100u/105° with 50V/100u/105° FR series (http://cdn-reichelt.de/documents/datenblatt/B300/DS_PANASONIC_FR.pdf)
 - d. CS02, CS01 originally ?/470u/105 with 50V/470u/105° LXZ series (http://cdn-reichelt.de/documents/datenblatt/B300/ELXZ_DS.pdf)
2. replacement of shorted diode DS2 in 5V circuit
 - a. DS2 originally SB2100 with same SB2100

2.5 Load Measurement 1: after electrolytic capacitor replacement

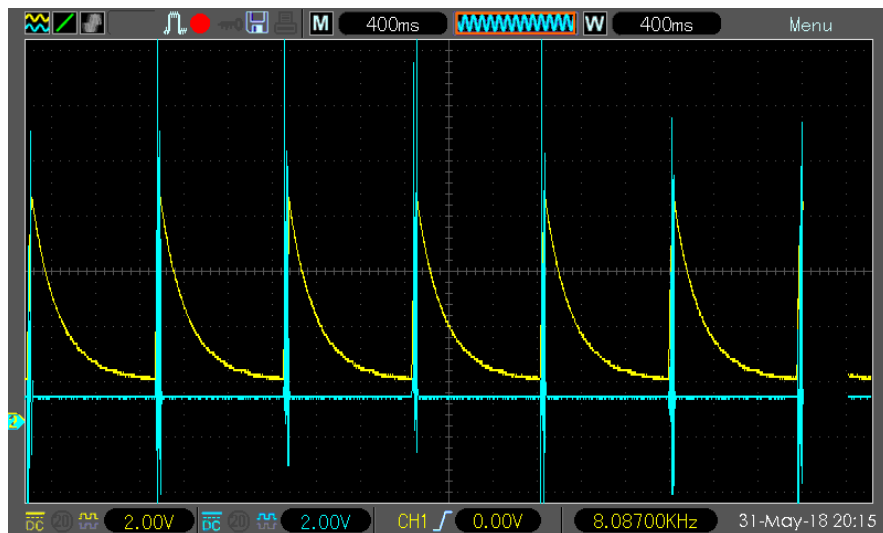
CH1 12V Output

CH2 5V Output



CH1 12V Output with 250Ω load

CH2 5V Output with 82Ω load



CH1 12V Output with 150Ω load

CH2 5V Output with 45Ω load



2.7 Load Measurement 2: after replacing DS02

