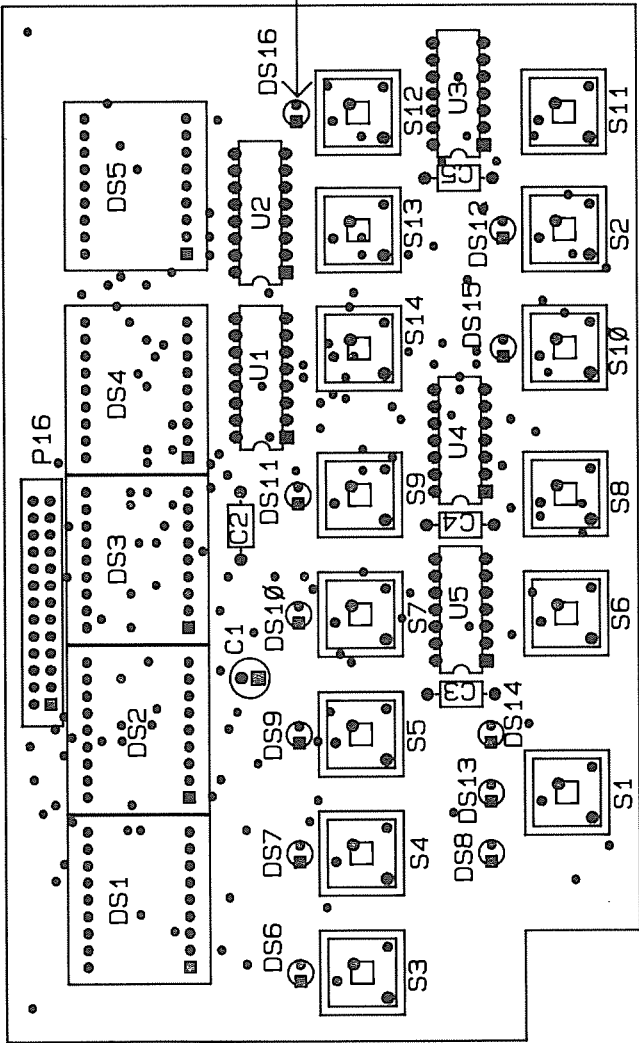


ZONE	LTR.	ECO NO.	REVISION	ENG.	DATE
	B	11243	RELEASED		3-7-86
	C	11584	REVISED		8-5-86

PUSHBUTTON SELECTION CHART	
SCHEMATIC DES.	PART NO.
S1, S3 THRU S9	29465-5
S2, S10 THRU S14	29465-6



INSTALL MK-22-3 MOUNTING KITS
UNDER ALL PL-71 PILOT LIGHTS
(DS6 THRU DS16) .

NOTE: FOR COMPONENT INFORMATION
REFER TO BILL OF MATERIAL
#196-000-02.

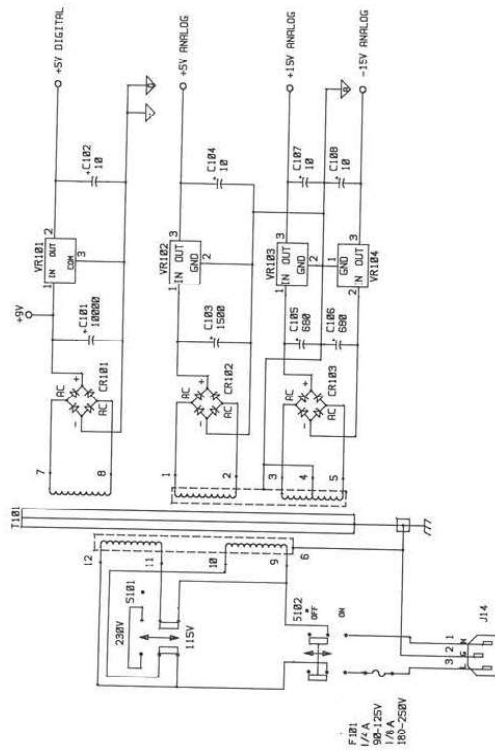
Figure 7-1. Display Board, Component Location Drawing, Dwg. No. 196-110

7-5/7-6



QTY	UOM	DESCRIPTION	REV	DATE
1	EA	196-106-100	1	10/1/66
1	EA	196-106-101	1	10/1/66
1	EA	196-106-102	1	10/1/66
1	EA	196-106-103	1	10/1/66
1	EA	196-106-104	1	10/1/66
1	EA	196-106-105	1	10/1/66
1	EA	196-106-106	1	10/1/66
1	EA	196-106-107	1	10/1/66
1	EA	196-106-108	1	10/1/66
1	EA	196-106-109	1	10/1/66
1	EA	196-106-110	1	10/1/66
1	EA	196-106-111	1	10/1/66
1	EA	196-106-112	1	10/1/66
1	EA	196-106-113	1	10/1/66
1	EA	196-106-114	1	10/1/66
1	EA	196-106-115	1	10/1/66
1	EA	196-106-116	1	10/1/66
1	EA	196-106-117	1	10/1/66
1	EA	196-106-118	1	10/1/66
1	EA	196-106-119	1	10/1/66
1	EA	196-106-120	1	10/1/66
1	EA	196-106-121	1	10/1/66
1	EA	196-106-122	1	10/1/66
1	EA	196-106-123	1	10/1/66
1	EA	196-106-124	1	10/1/66
1	EA	196-106-125	1	10/1/66
1	EA	196-106-126	1	10/1/66
1	EA	196-106-127	1	10/1/66
1	EA	196-106-128	1	10/1/66
1	EA	196-106-129	1	10/1/66
1	EA	196-106-130	1	10/1/66
1	EA	196-106-131	1	10/1/66
1	EA	196-106-132	1	10/1/66
1	EA	196-106-133	1	10/1/66
1	EA	196-106-134	1	10/1/66
1	EA	196-106-135	1	10/1/66
1	EA	196-106-136	1	10/1/66
1	EA	196-106-137	1	10/1/66
1	EA	196-106-138	1	10/1/66
1	EA	196-106-139	1	10/1/66
1	EA	196-106-140	1	10/1/66
1	EA	196-106-141	1	10/1/66
1	EA	196-106-142	1	10/1/66
1	EA	196-106-143	1	10/1/66
1	EA	196-106-144	1	10/1/66
1	EA	196-106-145	1	10/1/66
1	EA	196-106-146	1	10/1/66
1	EA	196-106-147	1	10/1/66
1	EA	196-106-148	1	10/1/66
1	EA	196-106-149	1	10/1/66
1	EA	196-106-150	1	10/1/66
1	EA	196-106-151	1	10/1/66
1	EA	196-106-152	1	10/1/66
1	EA	196-106-153	1	10/1/66
1	EA	196-106-154	1	10/1/66
1	EA	196-106-155	1	10/1/66
1	EA	196-106-156	1	10/1/66
1	EA	196-106-157	1	10/1/66
1	EA	196-106-158	1	10/1/66
1	EA	196-106-159	1	10/1/66
1	EA	196-106-160	1	10/1/66
1	EA	196-106-161	1	10/1/66
1	EA	196-106-162	1	10/1/66
1	EA	196-106-163	1	10/1/66
1	EA	196-106-164	1	10/1/66
1	EA	196-106-165	1	10/1/66
1	EA	196-106-166	1	10/1/66
1	EA	196-106-167	1	10/1/66
1	EA	196-106-168	1	10/1/66
1	EA	196-106-169	1	10/1/66
1	EA	196-106-170	1	10/1/66
1	EA	196-106-171	1	10/1/66
1	EA	196-106-172	1	10/1/66
1	EA	196-106-173	1	10/1/66
1	EA	196-106-174	1	10/1/66
1	EA	196-106-175	1	10/1/66
1	EA	196-106-176	1	10/1/66
1	EA	196-106-177	1	10/1/66
1	EA	196-106-178	1	10/1/66
1	EA	196-106-179	1	10/1/66
1	EA	196-106-180	1	10/1/66
1	EA	196-106-181	1	10/1/66
1	EA	196-106-182	1	10/1/66
1	EA	196-106-183	1	10/1/66
1	EA	196-106-184	1	10/1/66
1	EA	196-106-185	1	10/1/66
1	EA	196-106-186	1	10/1/66
1	EA	196-106-187	1	10/1/66
1	EA	196-106-188	1	10/1/66
1	EA	196-106-189	1	10/1/66
1	EA	196-106-190	1	10/1/66
1	EA	196-106-191	1	10/1/66
1	EA	196-106-192	1	10/1/66
1	EA	196-106-193	1	10/1/66
1	EA	196-106-194	1	10/1/66
1	EA	196-106-195	1	10/1/66
1	EA	196-106-196	1	10/1/66
1	EA	196-106-197	1	10/1/66
1	EA	196-106-198	1	10/1/66
1	EA	196-106-199	1	10/1/66
1	EA	196-106-200	1	10/1/66

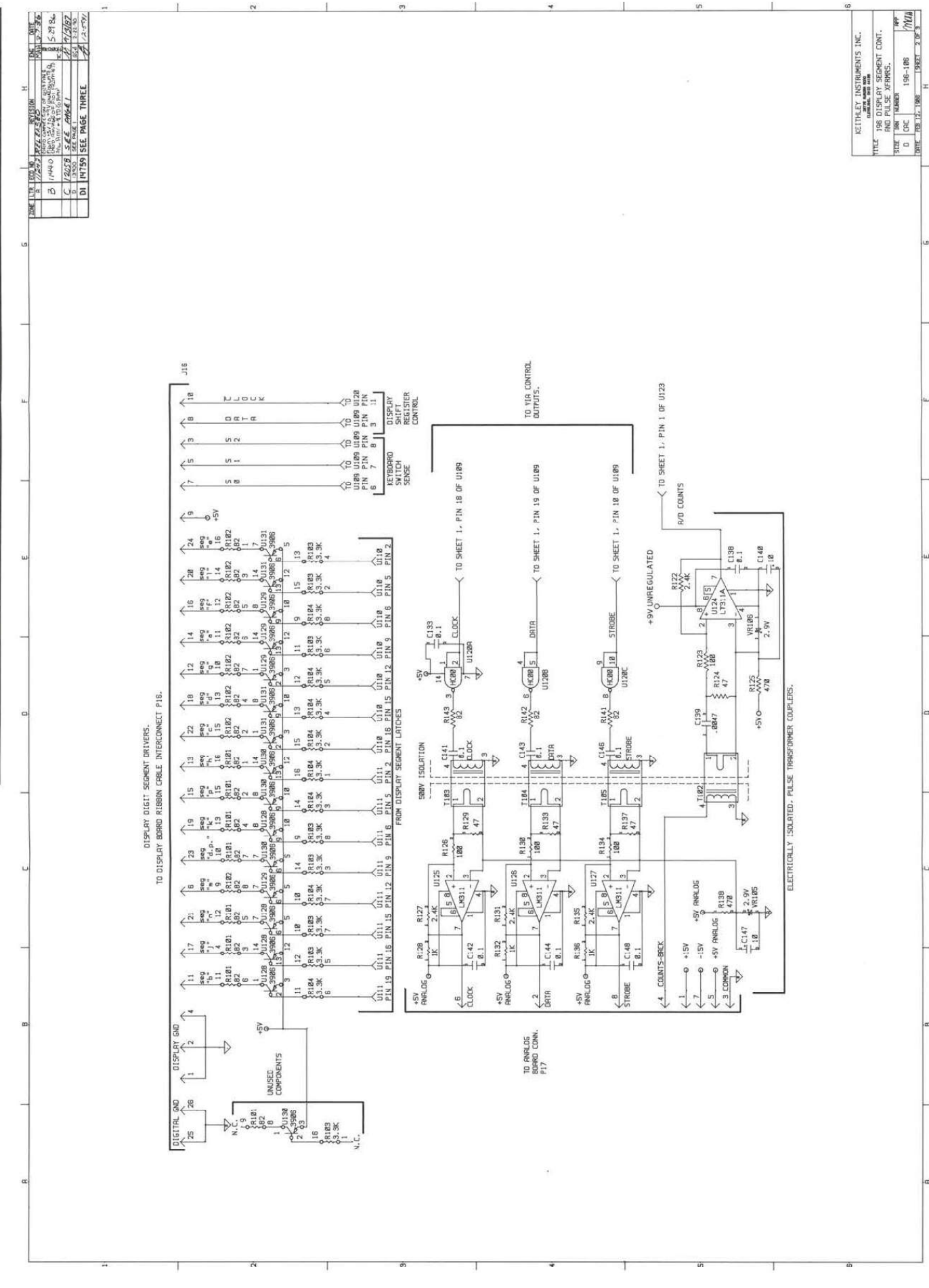
DI 14759 SEE PAGE THREE



- NOTES:
1. ALL RESISTOR VALUES ARE IN OHMS UNLESS OTHERWISE MARKED (K-KILOHMS, M-MEGOHMS).
 2. ALL CAPACITOR VALUES ARE IN MICROFARADS UNLESS OTHERWISE MARKED (PF-PICTOFARADS).
 3. ∇ DENOTES DIGITAL COMMON.
 4. ∇ DENOTES DISPLAY COMMON.
 5. ∇ DENOTES ANALOG SIGNAL COMMON.
 6. ∇ DENOTES CHASSIS CONNECTION.
 7. ∇ DENOTES MAINFRAME GROUND SCREW.
 8. ∇ DENOTES FRONT PANEL CONTROL.
 9. ∇ DENOTES REAR PANEL MOUNTING.

KEITHLEY INSTRUMENTS INC.	
196-106-106	
196 OHM POWER SUPPLY	
SIZE	108 14885
D	CPC
DATE	196-106
REV	10/1

Figure 7-4. Digital Board, Schematic Diagram, Dwg. No. 196-106 (sheet 1 of 3)



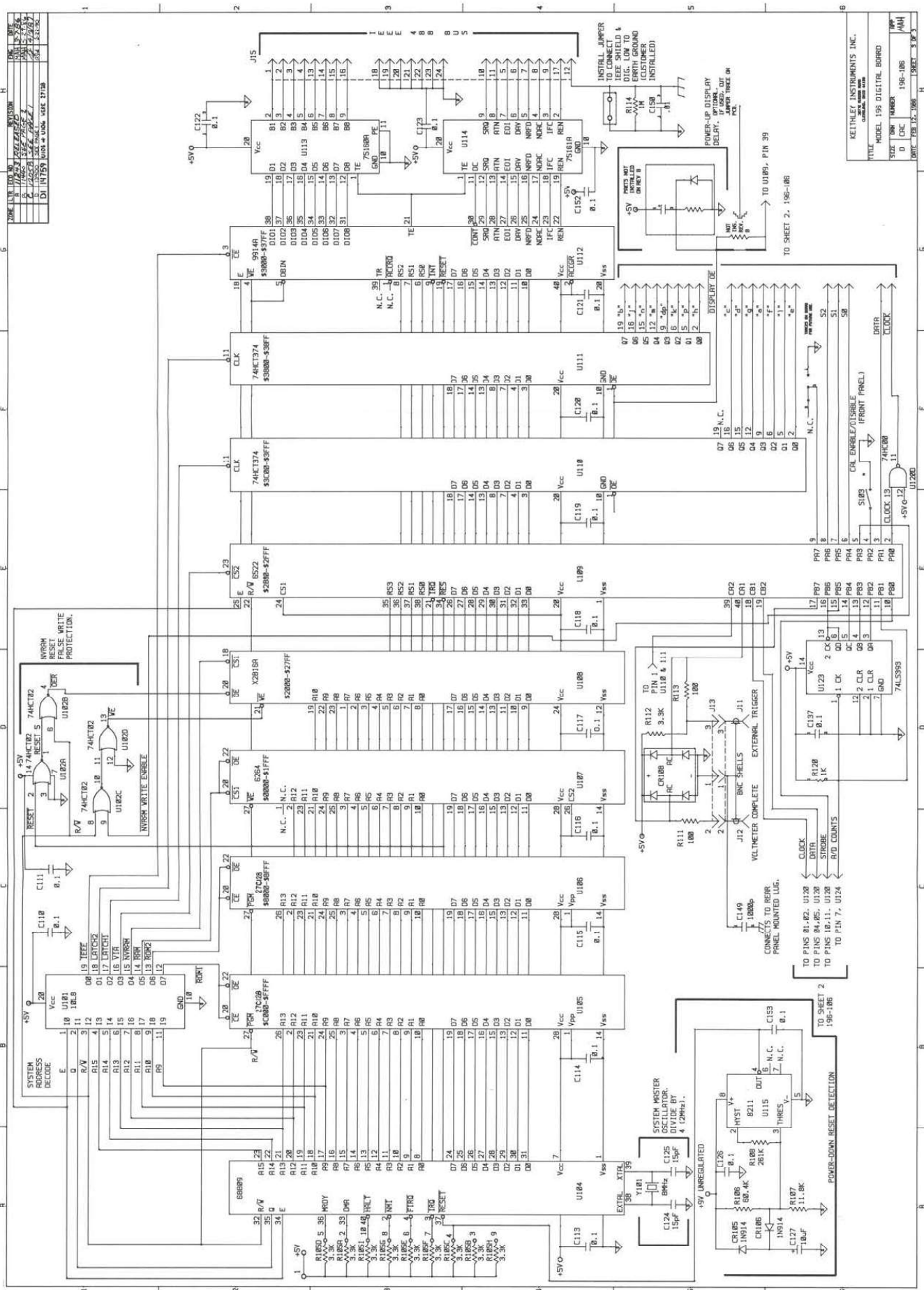


Figure 7-4. Digital Board, Schematic Diagram, Dwg. No. 196-106 (sheet 3 of 3)

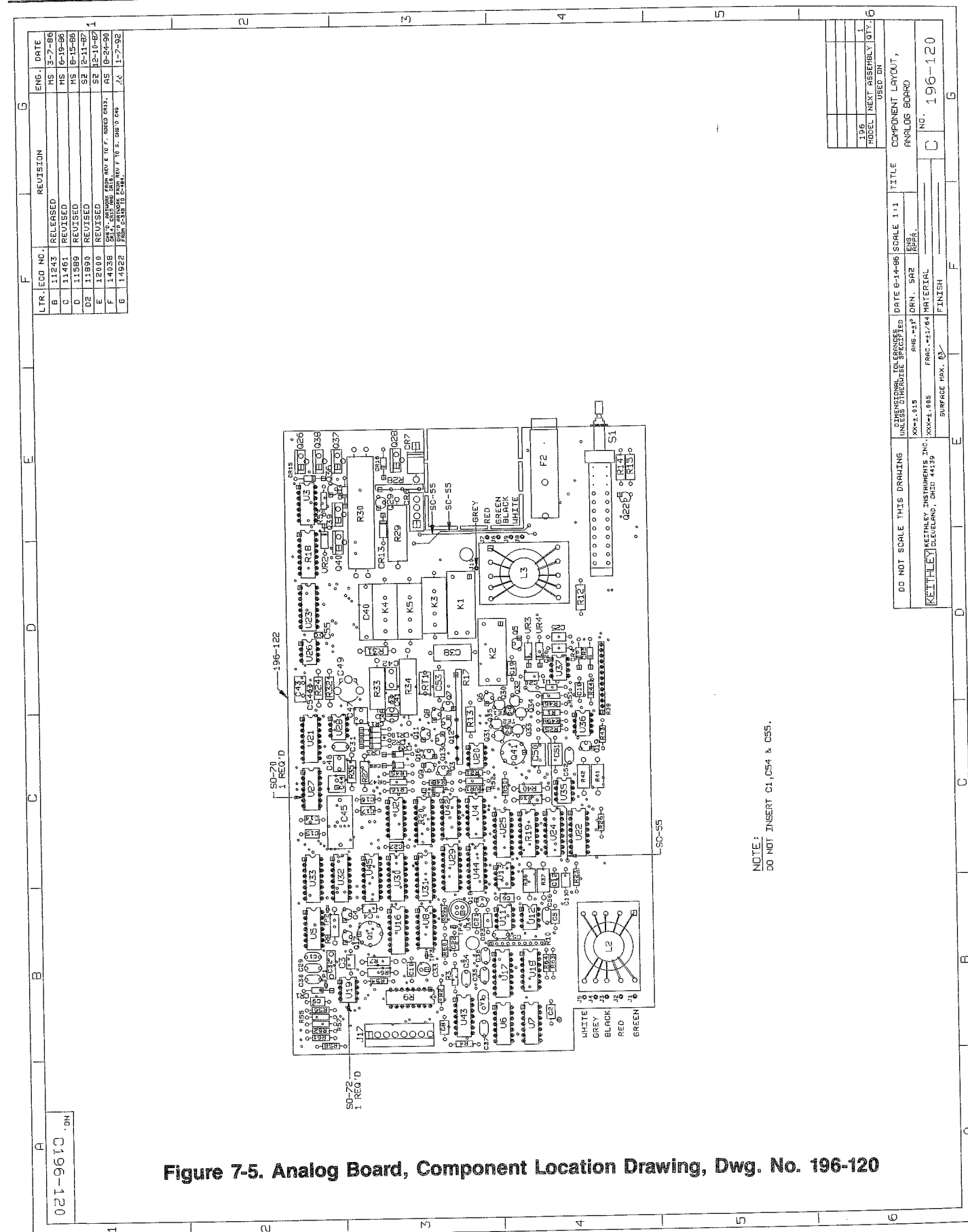
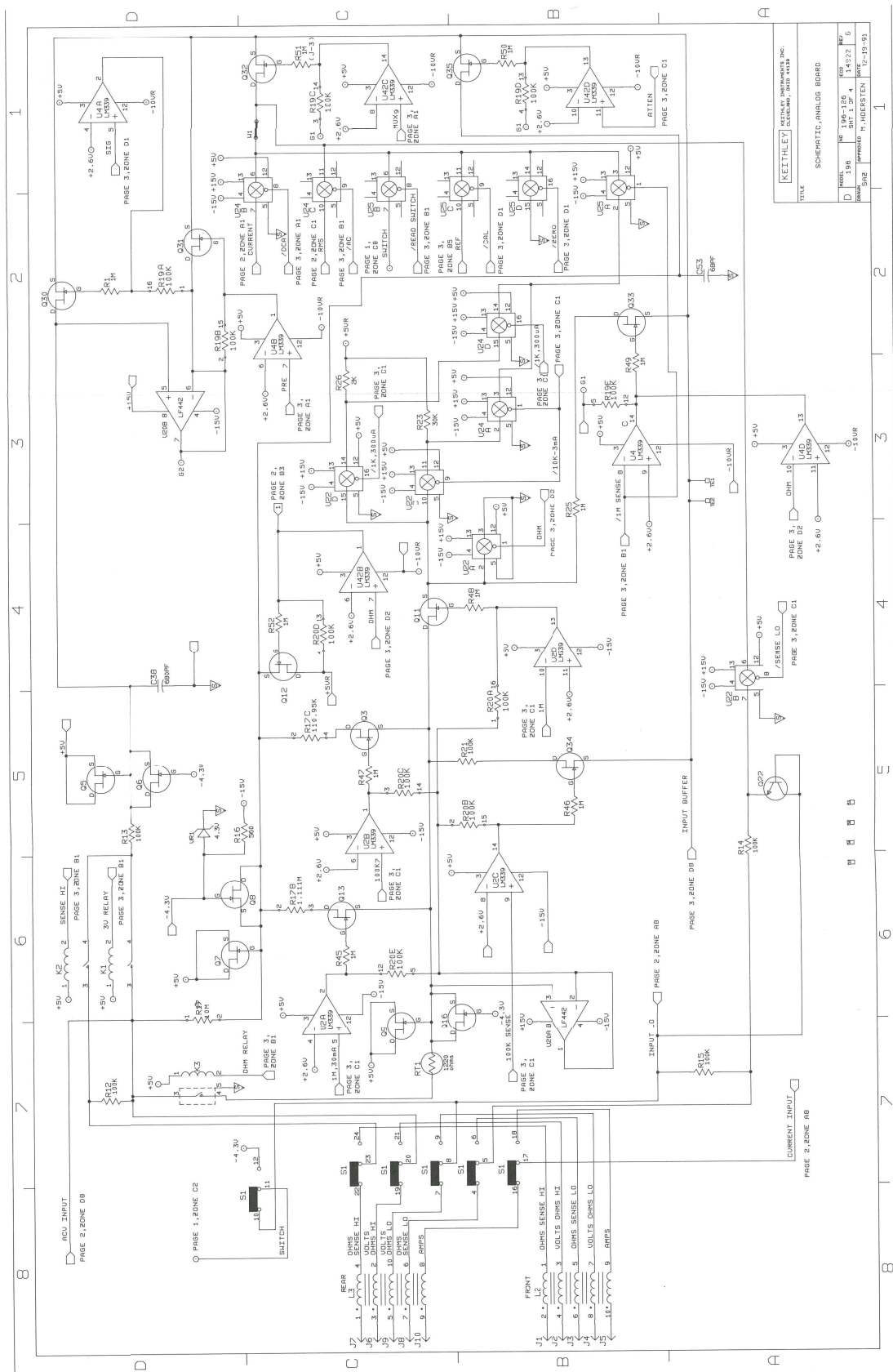


Figure 7-5. Analog Board, Component Location Drawing, Dwg. No. 196-120



INPUT TERMINAL IDENTIFICATION

Input Terminal	Schematic Designation	Front	Rear
VOLTS OHMS HI	P2		J6
VOLTS OHMS LO	P4		J9
OHMS SENSE HI	P1		J7
OHMS SENSE LO	P3		J8
AMPS	P5		J10

Figure 7-6. Analog Board, Schematic Diagram, Dwg. No. 196-126 (sheet 1 of 4)

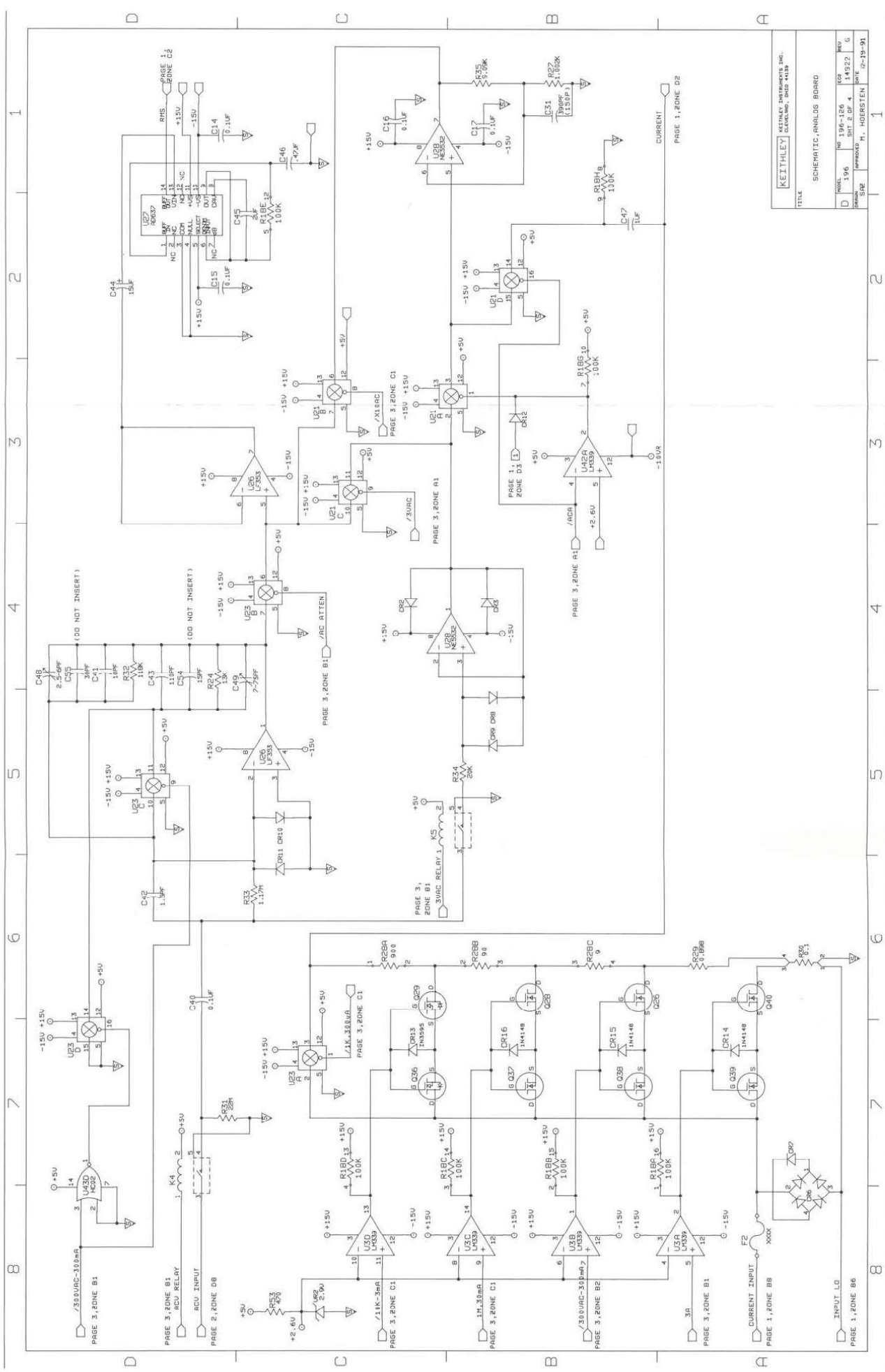


Figure 7-6. Analog Board, Schematic Diagram, Dwg. No. 196-126 (sheet 2 of 4)

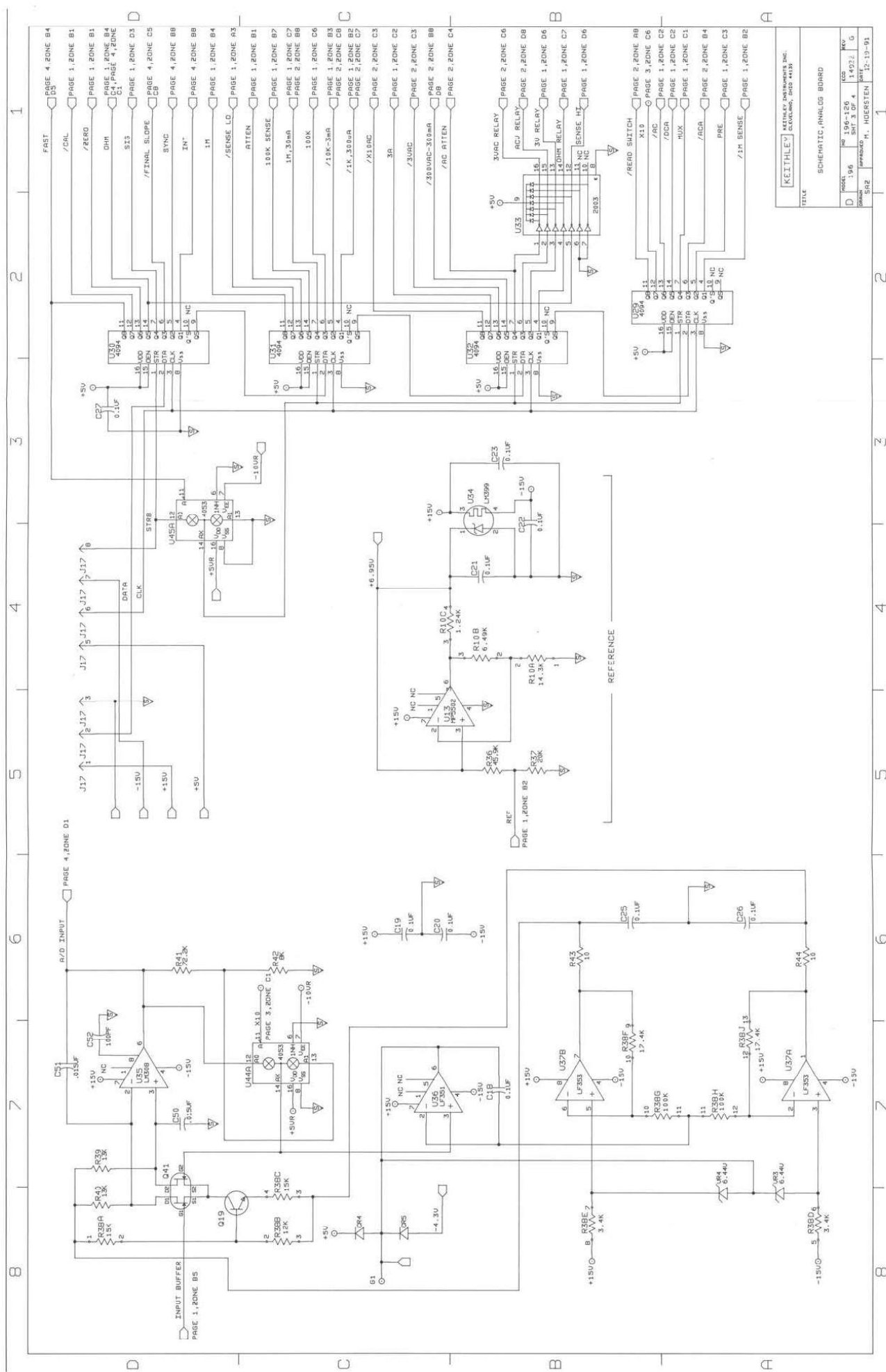


Figure 7-6. Analog Board, Schematic Diagram, Dwg. No. 196-126 (sheet 3 of 4)

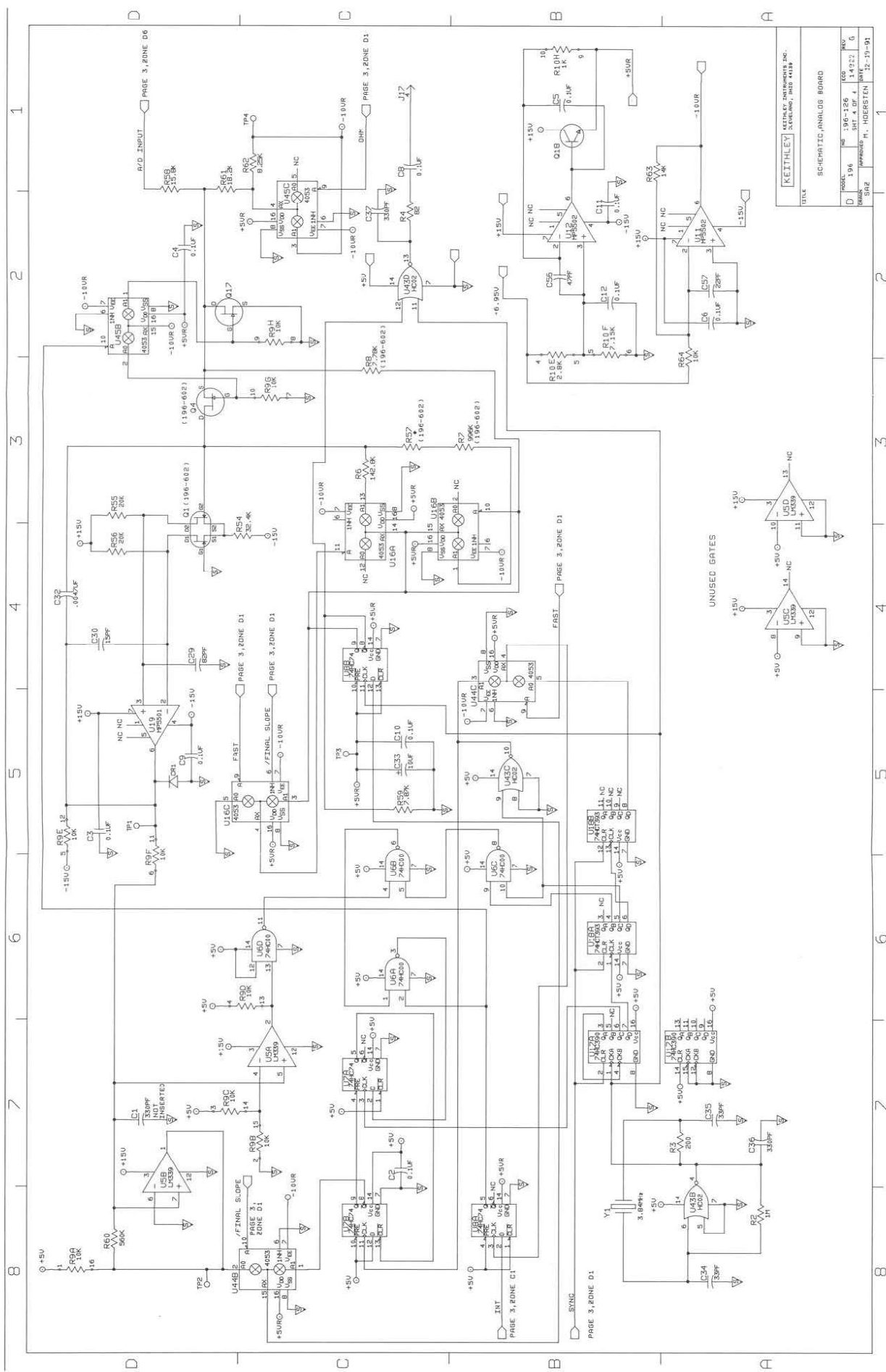


Figure 7-6. Analog Board, Schematic Diagram, Dwg. No. 196-126 (sheet 4 of 4)