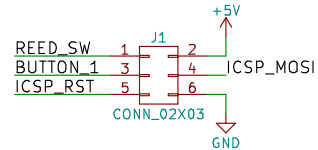
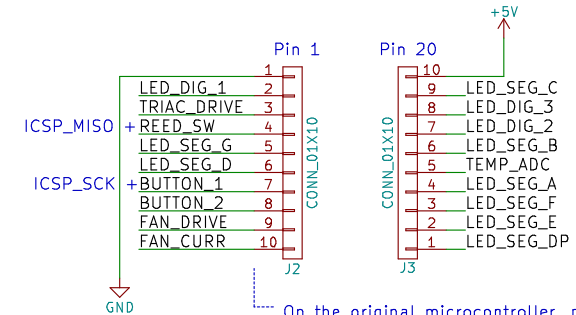


ICSP header for reprogramming without having to remove adapter

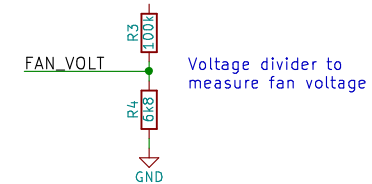


Connectors to match 20 pin DIP socket on PCB  
Original micro is a S3F94C4EZZ-DK94



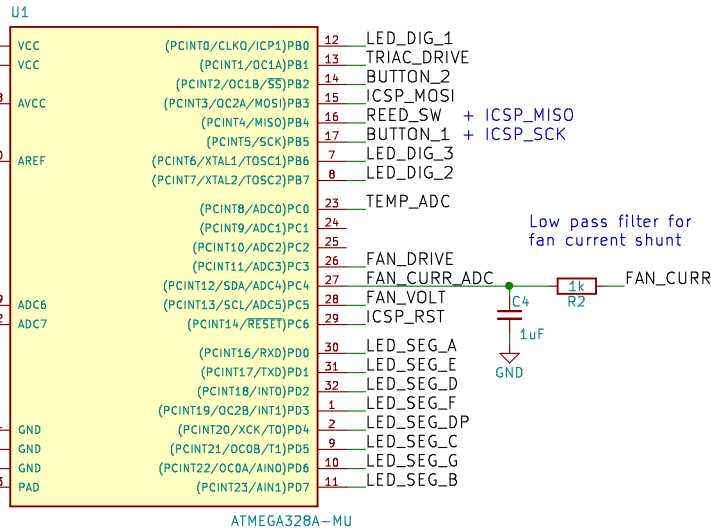
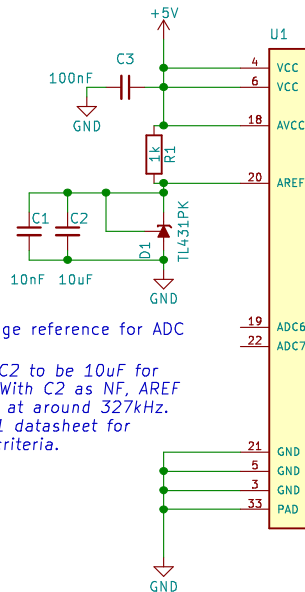
On the original microcontroller, pin 10 wasn't used and is not wired to anything on the main board. To save a flying wire to the adapter board, I will route the fan current sense through this pin via a wire soldered to the back of the original PCB

Resistor connected to pad on the PCB, then a flying wire connects to the required point on the main original PCB



2.5v voltage reference for ADC

Requires C2 to be 10uF for stability. With C2 as NF, AREF oscillates at around 327kHz. See TL431 datasheet for stability criteria.



Andy Cowan

Sheet: /  
File: 858D Adapter.sch

**Title: 858D+ Microcontroller Adapter**

Size: A4 Date: 2017-10-31

KiCad E.D.A. kicad 4.0.6

Rev: 1.0

Id: 1/1