

Trigger Circuit

Q32_1

Hanisk DSO5062B hv1007 -- Jan 2012
Votruks DSO2082C, DSO1062D

MMBF493, SST4393 - CCPBE; CCGBF (CC)
marked

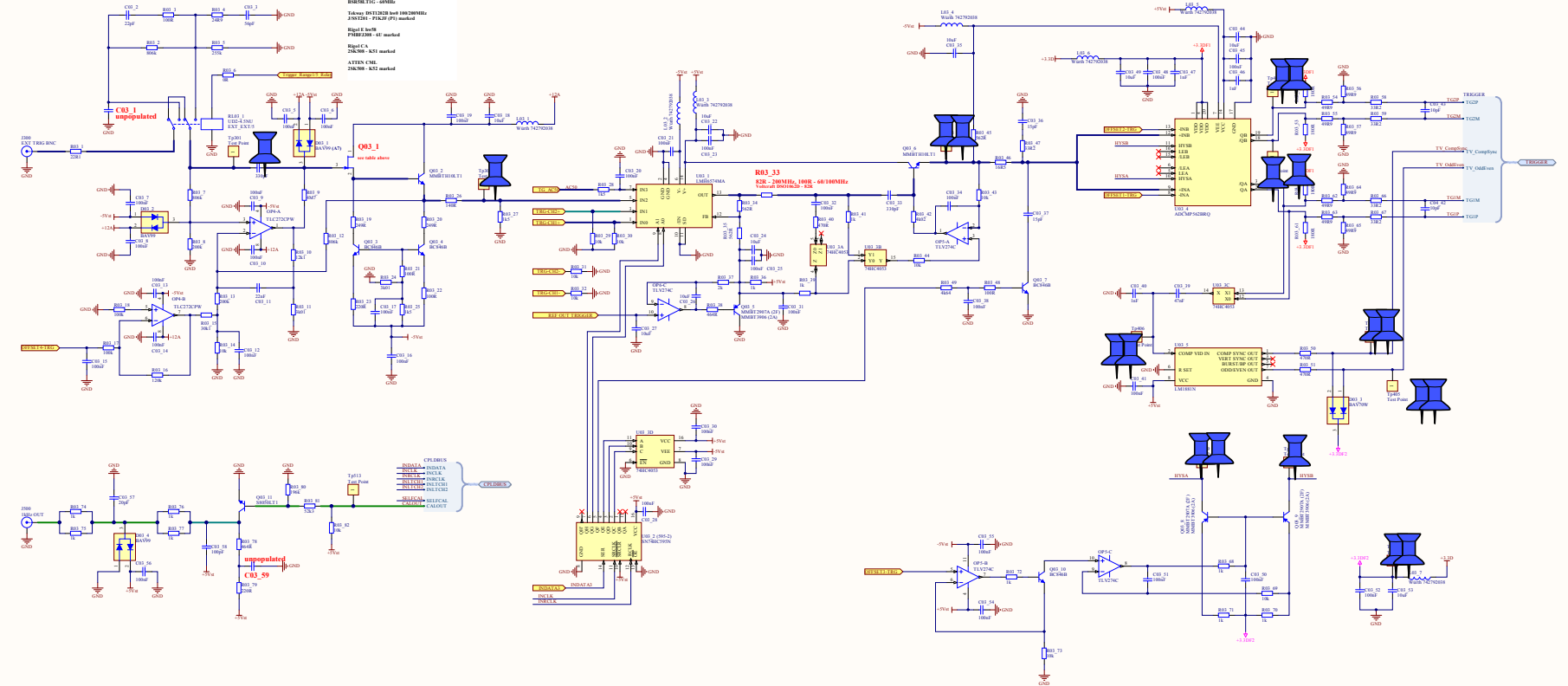
Tekway DST1062B hv1007 Sep 2011
BSK59L YIG - 60MHz

Tekway DST1202B hv0 100/200MHz
JSS1201 - PIKJF (PI) marked

Rigal E hv58
PMHFJ388 - 6U marked

Rigal CA
23k508 - K51 marked

ATTN CML
23k508 - K52 marked

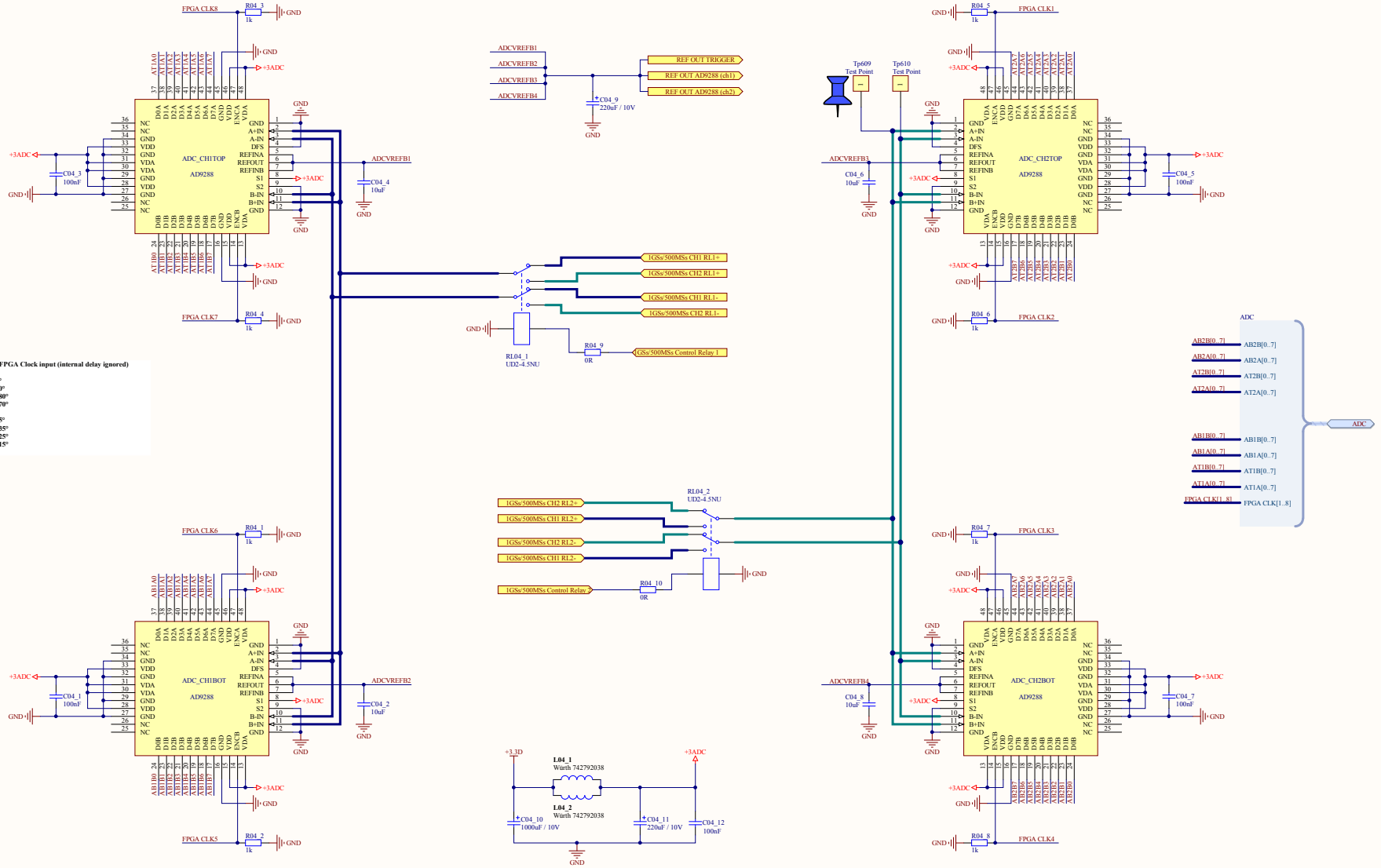


ADC Circuit

Clocks relative to FPGA Clock input (internal delay ignored)

FPGA Clock 8 - 0°
 FPGA Clock 7 - 90°
 FPGA Clock 6 - 180°
 FPGA Clock 5 - 270°

FPGA Clock 1 - 45°
 FPGA Clock 2 - 135°
 FPGA Clock 3 - 225°
 FPGA Clock 4 - 315°



Power Distribution Circuit

